

ENGLISH

# Hakki Pilke

## 37

### FIREWOOD PROCESSOR SPARE PARTS MANUAL



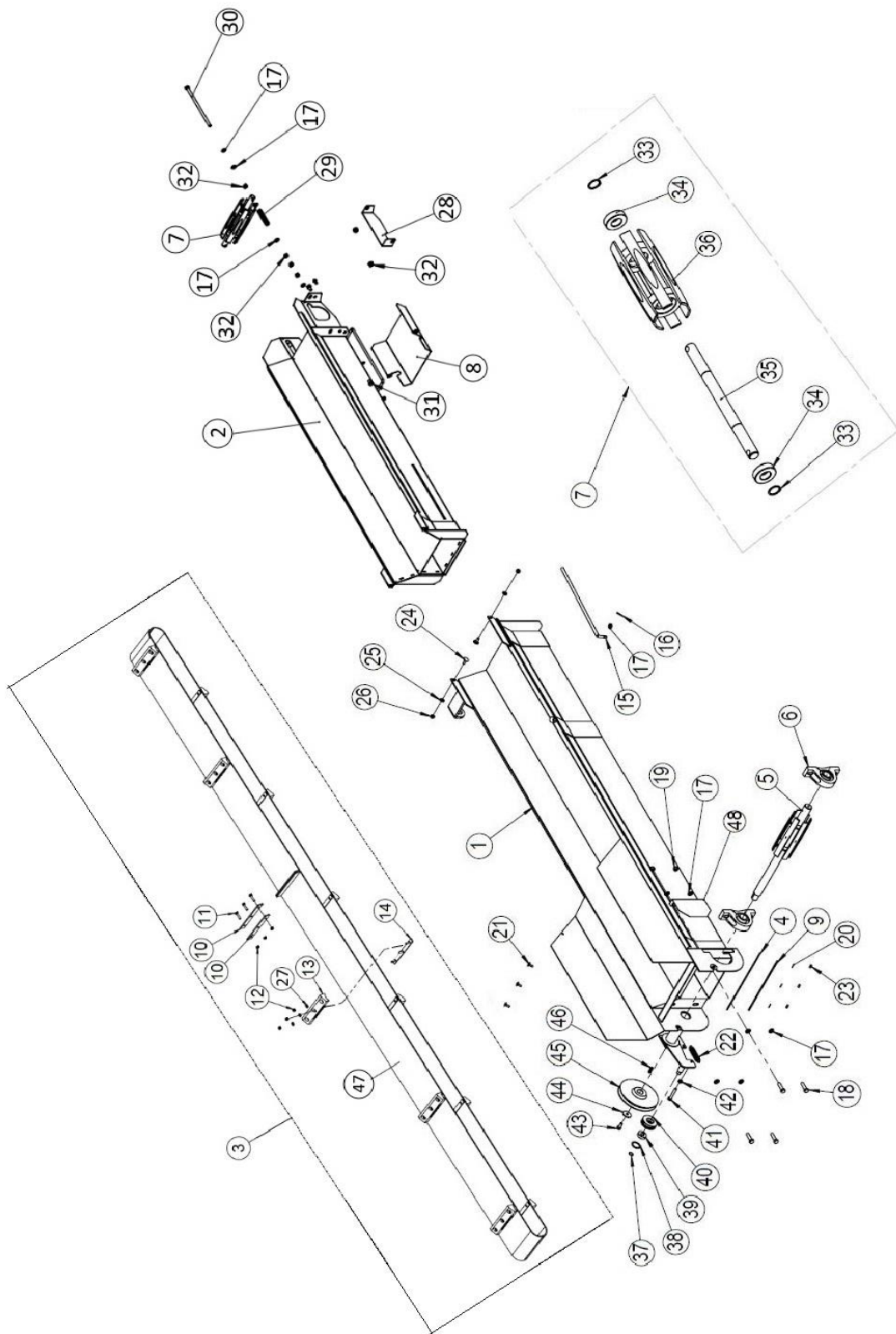
**MAASELÄN KONE OY**  
Valimotie 1, FI-85800 Haapajärvi, Finland  
tel. 08-7727300, fax. 08-7727320  
info@maaselankone.fi  
www.maaselankone.fi

## Table of contents

1.1	Out-feed conveyor (10101) .....	4
1.2	Out-feed conveyor parts list (10101) .....	5
1.3	Pivoting out-feed conveyor (50016803).....	6
1.4	Parts list for the pivoting out-feed conveyor (50016803).....	7
1.5	Out-feed conveyor drive belt pack (50017863).....	8
1.6	Out-feed conveyor drive roller parts list (50017863).....	8
1.7	Upper section of the self-cleaning conveyor (10831) .....	9
1.8	Parts list for the upper section of the self-cleaning conveyor (10831) .....	9
1.9	Assembly of the cleaning upper section (10831) .....	10
1.10	Parts list for the cleaning upper section (10831) .....	10
1.11	Cover plate for the wood grille of the cleaning conveyor (37102) .....	11
1.12	Parts list for the wood grille cover plate of the cleaning conveyor (37102) .....	11
1.13	Frame.....	12
1.14	Frame parts list.....	13
1.15	Operating linkage .....	14
1.16	Parts list for the operating linkage .....	15
1.17	Power transmission .....	16
1.18	Power transmission parts list .....	17
1.19	Angle transmission tr (10745) .....	18
1.20	Angle transmission tr parts list (10745).....	18
1.21	Angle transmission electricity (10746) .....	19
1.22	Angle transmission electricity, parts list (10746) .....	19
1.23	In-feed table .....	20
1.24	In-feed table parts list .....	21
1.25	Cutting .....	22
1.26	Cutting parts list .....	23
1.27	Splitting.....	24
1.28	Splitting function parts list .....	24
1.29	In-feed conveyor extension.....	25
1.30	In-feed conveyor extension parts list .....	25
1.31	Automatic speed valve (37360).....	26
1.32	Automatic speed valve parts list (37360) .....	26
1.33	Parts list of the electric motor assembly.....	27

1.34	Parts list of the electric motor assembly.....	27
1.35	Log length limiter.....	28
1.36	Log length limiter parts list.....	28

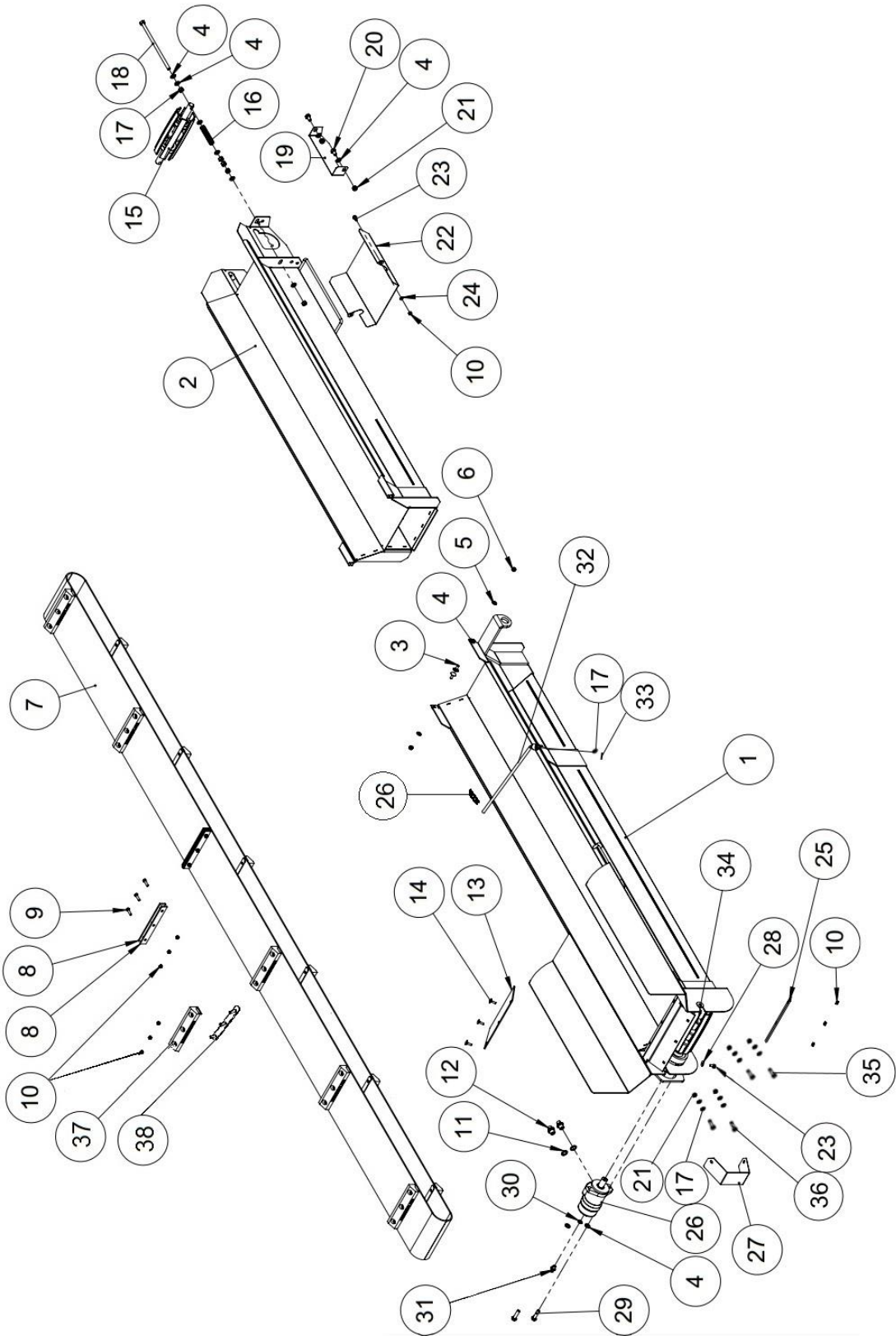
### 1.1 Out-feed conveyor (10101)



## 1.2 Out-feed conveyor parts list (10101)

Number	Name	Part number	Dimensions	Pcs
1	Lower section of the conveyor	10125		1
2	Upper section of the conveyor	10126		1
3	Conveyor belt	10317		1
4	Conveyor rubber flap	95130		1
5	Conveyor belt pulley	50001401		1
6	Bearing UCP 207	95058		2
7	Conveyor belt pulley	10132		1
8	Upper roller guard	10868		1
9	Fastening rod for the rubber flap	61172		1
10	Connection rod for the belt	10136		2
11	Hex screw	96131	M8 x 30	3
12	Nyloc nut	96222	M8	36
13	Conveyor cleat, plastic or Conveyor cleat, metal	95548 or 10135		11
14	Plate fastening	10863		11
15	Conveyor belt holder	10819		1
16	Cotter pin	96246	3.2 x 36	1
17	Washer	96058	M12	21
18	Hex screw	96148	M12 x 40	4
19	Nyloc nut	96218	M12	6
20	Washer	96061	M8	3
21	Lock screw	96187	M8 x 20	3
22	Draw spring	95016	2 x 20 x 100	1
23	Nut	96196	M8	3
24	Lock screw	96186	M10 x 25	2
25	Washer	96049	M10	2
26	Nyloc nut	96068	M10	2
27	Plastic cleat washer	96061	M8	33
28	Protective plate for the roller	10858		1
29	Pressure spring	95543	4 x 22 x 100	2
30	Hex screw	96355	M12 x 280	2
31	Hex screw	96144	M12 x 20	2
32	Hex screw	96200	M12	10
33	Retaining ring	96042		2
34	Bearing 6205	95050		2
35	Upper roller shaft	10132b		1
36	Upper roller, welded	50000211		1
37	Retaining ring	96039	17 x 1	1
38	Retaining ring	96352	40 x 1.75	1
39	Bearing 6203	95048		1
40	Tensioner pulley	10666		1
41	Hex screw	96101	M10 x 65	1
42	Nut	96199	M10	1
43	Hex screw	96139	M10 x 25	1
44	Washer	10492	D40 x 11 x 3	1
45	Belt pulley	95110	180	1
46	Wedge	37075	7 x 8 x 30	1
47	Conveyor belt, perforated	95126		1
48	Shaft end guard	10128c		1

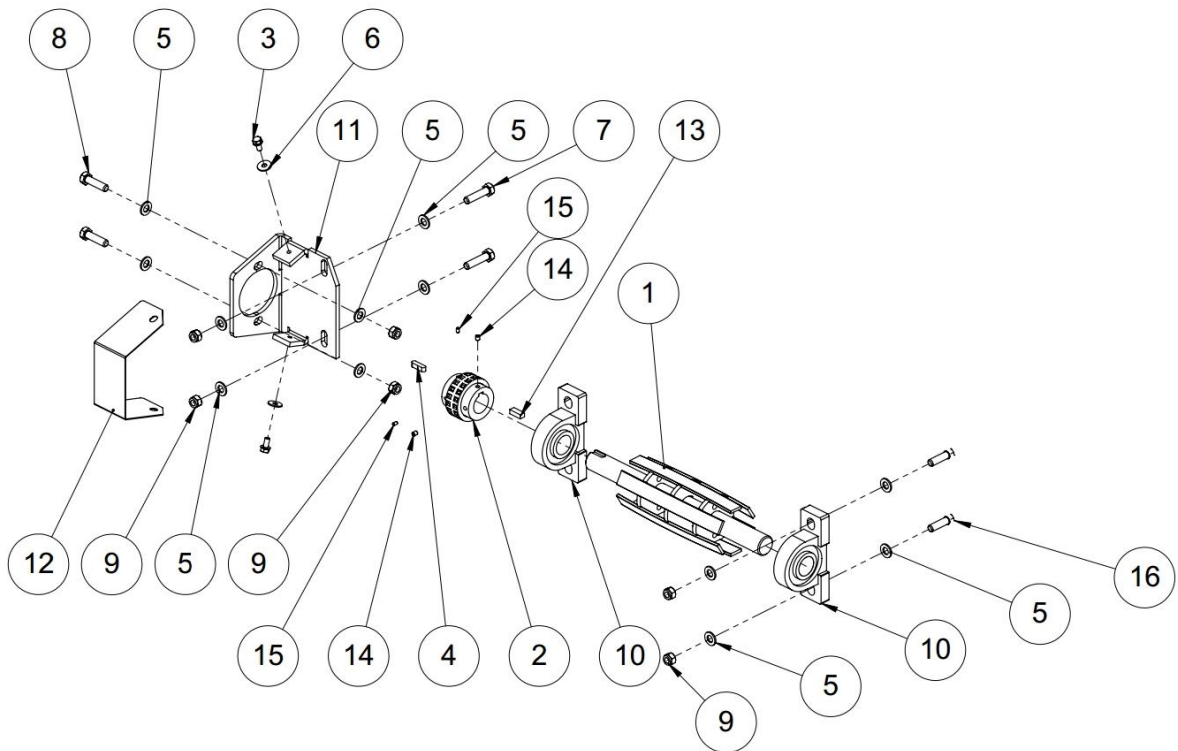
### 1.3 Pivoting out-feed conveyor (50016803)



**1.4 Parts list for the pivoting out-feed conveyor (50016803)**

Number	Name	Part number	Dimensions	Pcs
1	Lower section of the conveyor, pivoting	50016683		1
2	Upper section of the conveyor	10126		1
3	Lock screw	96186	M10 x 25	2
4	Washer	96058	M12 / 13	21
5	Washer	96049	M10	2
6	Nyloc nut	96068	M10	2
7	Conveyor belt	10317		1
8	Connection rod for the belt	10136		2
9	Hex screw	96165	M8 x 30	3
10	Nyloc nut	96222	M8	41
11	USIT	97213	1/2"	2
12	Double nipple	97203	3/8" x 1/2"	2
13	Conveyor rubber flap	95130	4 x 130 x 300	1
14	Lock screw	96191	M8 x 25	3
15	Upper roller of the conveyor	10132		1
16	Pressure spring	95543	d4 x D22 x 100	2
17	Nut	96200	M12	18
18	Hex screw	96355	M12 x 280	2
19	Protective plate for the roller	10858		1
20	Hex screw	96144	M12 x 20	2
21	Nyloc nut	96218	M12	8
22	Upper roller guard	10868		1
23	Flange bolt	96172	M8 x 16	4
24	Washer	96061	M8 / 8.4	2
25	Fastening rod for the rubber flap	61172		1
26	Hydraulic motor MP50CU	97334		1
27	Out-feed conveyor clutch guard	47654		1
28	Washer	96085	M8	2
29	Hex screw	96149	M12 x 45	2
30	USIT	97211	1/4"	1
31	Double nipple	97200	1/4" x 1/4"	1
32	Conveyor belt holder	10819		1
33	Cotter pin	96246	3.2 x 32	1
34	Drive roller with chain coupling	50017474		1
35	Hex screw	96148	M12 x 40	2
36	Hex screw	96108	M12 x 50	2
37	Conveyor cleat, plastic or Conveyor cleat, metal	95548 10135		11
38	Cleat connecting plate	10863	M8 x 30	11

### 1.5 Out-feed conveyor drive belt pack (50017863)

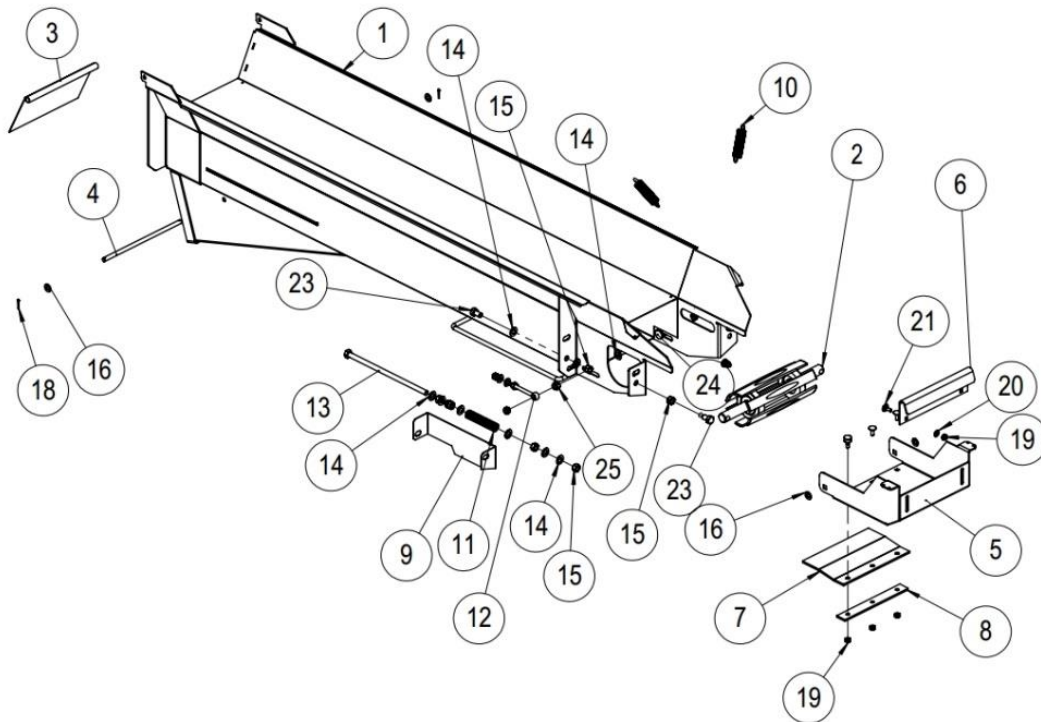


### 1.6 Out-feed conveyor drive roller parts list (50017863)

Number	Name	Part number	Dimensions	Pcs
1	Drive roller	50015676		1
2	Chain coupling pack	95448		1
3	Flange bolt	96172	M8 x 16	2
4	Hydraulic motor wedge	97371		1
5	Washer	96058		12
6	Washer	96085	M8	2
7	Hex screw	96108	M12 x 50	2
8	Hex screw	96107	M12 x 45	2
9	Nyloc nut	96218	M12	6
10	Bearing UCP 207	95058		2
11	Motor fastening plate	50015466		1
12	Clutch guard	47654		1
13	Wedge	47642	8 x 10 -25	1
14	Socket set screw	96228	M8 x 8	2
15	Socket set screw	96362	M6x8	2
16	Hex screw	96148	M12 x 40	2



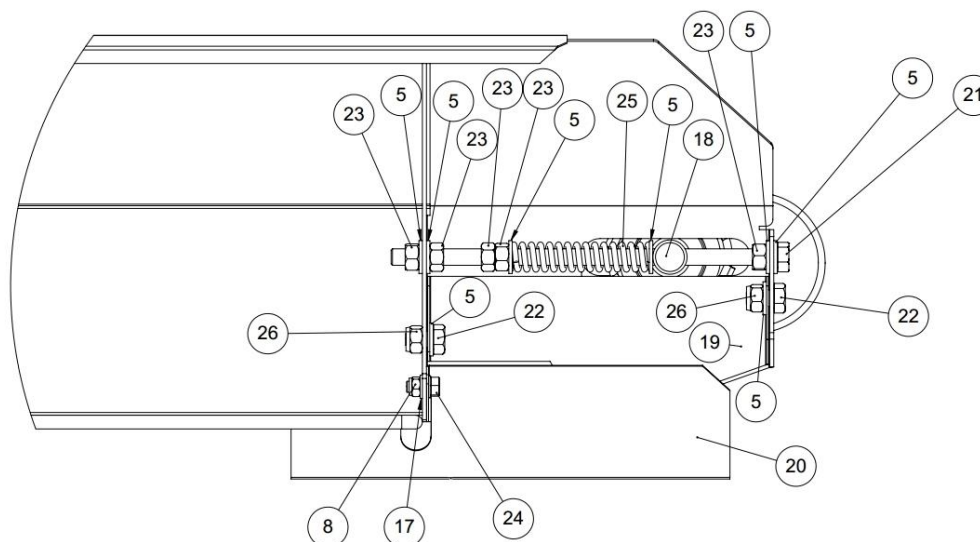
### 1.7 Upper section of the self-cleaning conveyor (10831)



### 1.8 Parts list for the upper section of the self-cleaning conveyor (10831)

Number	Name	Part number	Dimensions	Pcs
1	Upper section of the conveyor, debris removal	10832		1
2	Upper roller	10132		1
3	Guard plate for the debris opening	37414		1
4	Hinge rod	37411		1
5	Debris separator	10834		1
6	Lip plate	37412		1
7	Debris separator rubber	10864		1
8	Connection rod for the belt	10136		1
9	Protective plate for the roller	10858		1
10	Draw spring	95390	2 x 20 x 100	2
11	Pressure spring	95543	4 x 22 x 100	2
12	Screw hoop	96338	M10 x 90	2
13	Hex screw	96355	M12 x 280	2
14	Washer	96058	M12	17
15	Nut	96200	M12	12
16	Washer	96049	M10	8
17	Nyloc nut	96068	M10	2
18	Cotter pin	96244	2.5 x 20	2
19	Nyloc nut	96222	M8	5
20	Washer	96061	M8	2
21	Lock screw	96187	M8 x 20	6
22	Nut	96199	M10	4
23	Hex screw	96144	M12 x 20	2
24	Lock screw	96312	M10 x 50	2
25	Nyloc nut	96218	M12	2

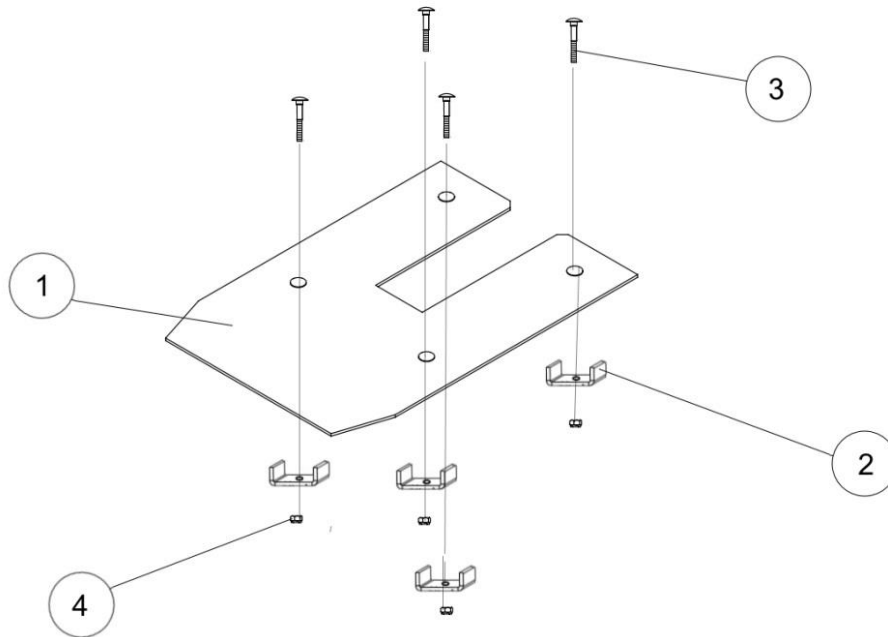
### 1.9 Assembly of the cleaning upper section (10831)



### 1.10 Parts list for the cleaning upper section (10831)

Number	Name	Part number	Dimensions	Pcs
5	Washer	96058	M12 / 13	20
8	Nyloc nut	96222	M8	8
9	Hex screw	96165	M8 x 30	3
17	Washer	96061	M8 / 8.4	2
18	Upper roller of the conveyor	10132		1
19	Protective plate for the roller	10858		1
20	Upper roller guard	10868		1
21	Hex screw	96355	M12 x 280	2
22	Hex screw	96144	M12 x 20	2
23	Nut	96200	M12	10
24	Flange bolt	96172	M8 x 16	4
25	Pressure spring	95543	4 x 22 x 100	2
26	Nyloc nut	96218	M12	4

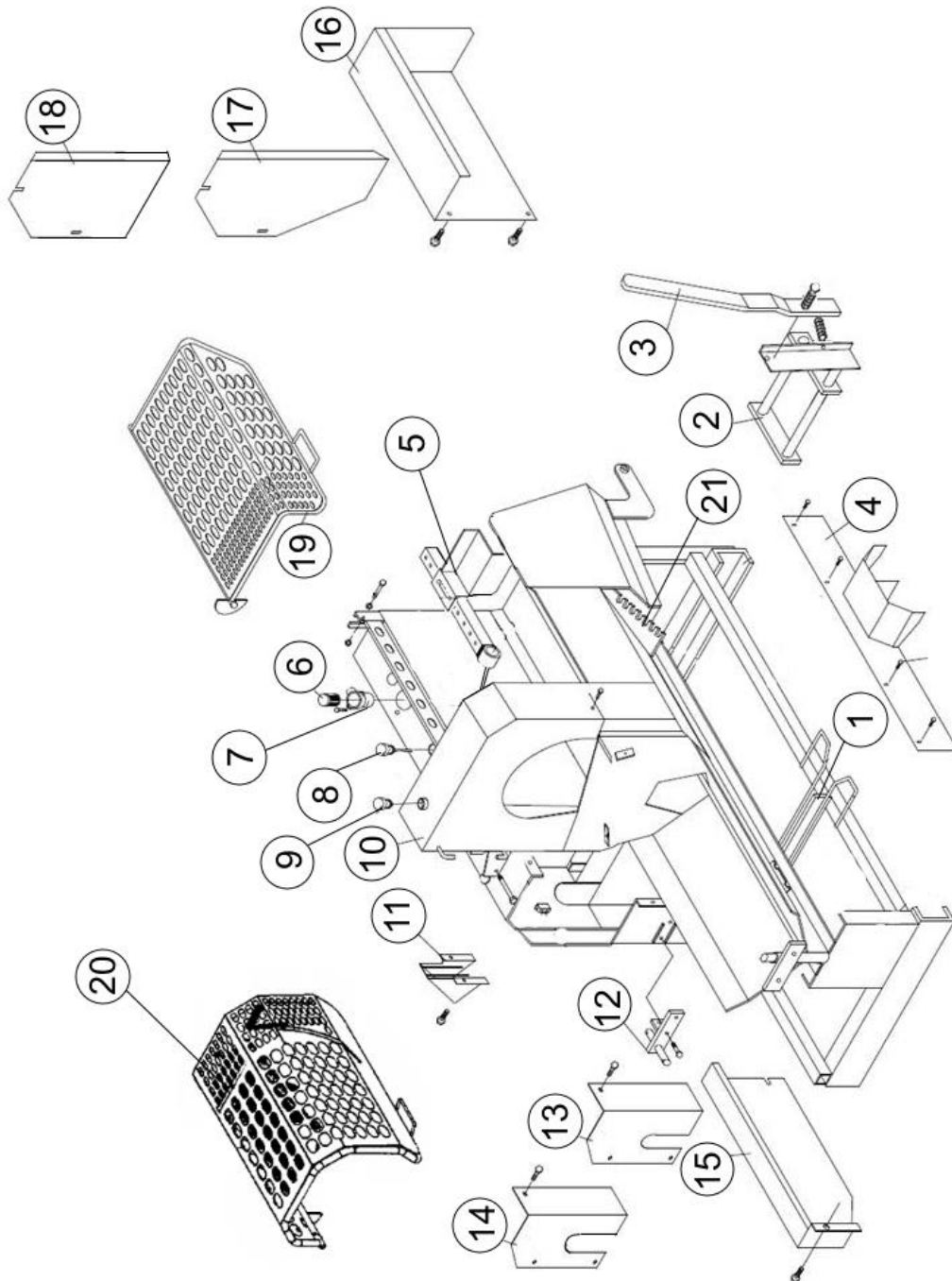
### 1.11 Cover plate for the wood grille of the cleaning conveyor (37102)



### 1.12 Parts list for the wood grille cover plate of the cleaning conveyor (37102)

Number	Name	Part number	Dimensions	Pcs
1	Grille cover plate	37362		1
2	Cover plate fastening	61263		4
3	Nyloc nut	96222	M8	4
4	Lock screw	96342	M8 x 50	4

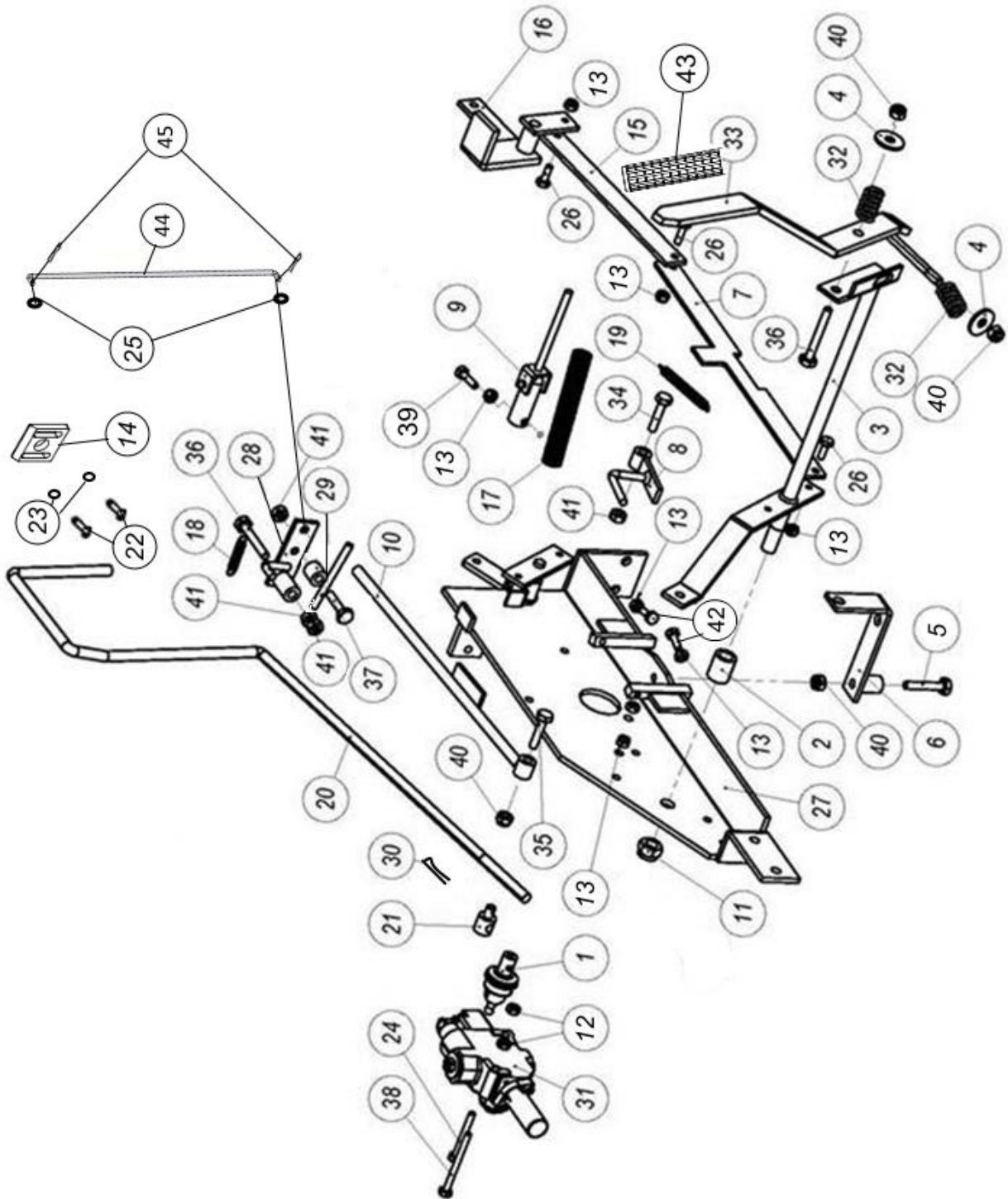
### 1.13 Frame



**1.14 Frame parts list**

<b>Number</b>	<b>Name</b>	<b>Part number</b>	<b>Dimensions</b>	<b>Pcs</b>
1	Reversing mechanism	10480		1
2	Assembly of the blade adjustment mechanism	37000e		1
3	Knife adjustment lever	10514		1
4	Frame front guard	37115		1
5	Log length limiter	10062		1
6	Filter insert	97290		1
7	Filter box + filter	97291		1
8	Filler cap with dip stick	97428		1
9	Filler cap	97429		1
10	Upper container	37333		1
11	Sawdust guide	10150		1
12	Drive pin	10082		2
13	Oil tank end guard	10080		1
14	Oil tank end guard, easy	10080 h		1
15	Valve guard	10187		1
16	Belt guard	10738		1
17	Pump cover plate	10579		1
18	Pump guard plate, pivoting	10879		1
19	Upper guard	10004		1
20	Front cage + log press	10359		1

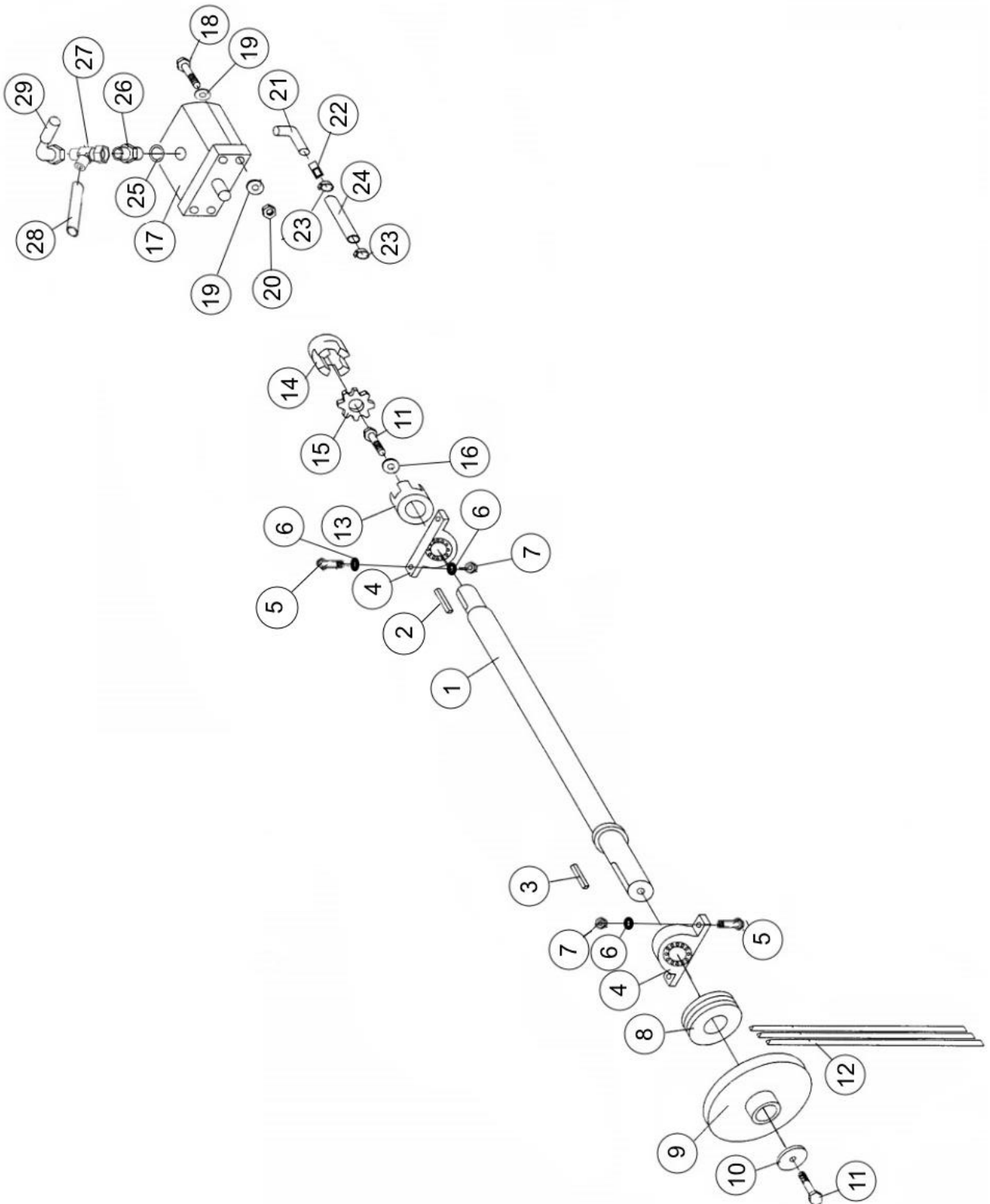
### 1.15 Operating linkage



**1.16 Parts list for the operating linkage**

Number	Name	Part number	Dimensions	Pcs
1	Ball joint	97354		1
2	Intermediate bushing	10386		1
3	Locking lever for operation and cages	37120		1
4	Washer	96048	M10	2
5	Hex screw	96100	M10 x 60	1
6	Flat rod for the valve	10145		1
7	Flat rod for the stopping lever	10026		1
8	Control lever	10023		1
9	Jointed lever	10167		1
10	Control lever	10025		1
11	Nyloc nut	96219	M16	1
12	Nut	96196	M8	2
13	Nyloc nut	96222	M8	8
14	Adjustment piece	50012262		1
15	Flat rod for the stopping mechanism	10017e		1
16	Stopping linkage	37017		1
17	Pressure spring	95018	22 x 2 - 140	1
18	Draw spring	95391	0.9 x 9.8 - 40	1
19	Draw spring	95013	0.9 x 9.8 - 100	1
20	Safety rod	37320		1
21	Joint nipple for the safety rod	10321		1
22	Hex socket screw	96393	M6 x 16	2
23	Lock washer	96392	M6	2
24	Hex screw	96126	M8 x 60	1
25	Washer	96057	M8	2
26	Hex screw	96161	M8 x 20	3
27	Valve body	10029		1
28	Control lever	10016		1
29	Lifting piece for the triggering lever	10015		1
30	Cotter pin	96246	3.2 x 32	1
31	Valve block SD11, no springs	97401		1
32	Pressure spring	95008	3.5 x 22 -38	2
33	Operation/return switch	10404		1
34	Hex screw, hard	96088	M10 x 40	1
35	Hex screw	96098	M10 x 40	1
36	Hex screw	96101	M10 x 65	1
37	Hex screw	96098	M10 x 40	1
38	Hex screw	96168	M8 x 80	1
39	Hex screw, hard	96131	M8 x 30	1
40	Nyloc nut	96067	M10	4
41	Nut	96199	M10	5
42	Hex screw, hard	96360	M8 x 25	2
43	Handle	95034		1
44	Connecting rod	10013		1
45	Cotter pin	96245	3.2 x 20	2

### 1.17 Power transmission

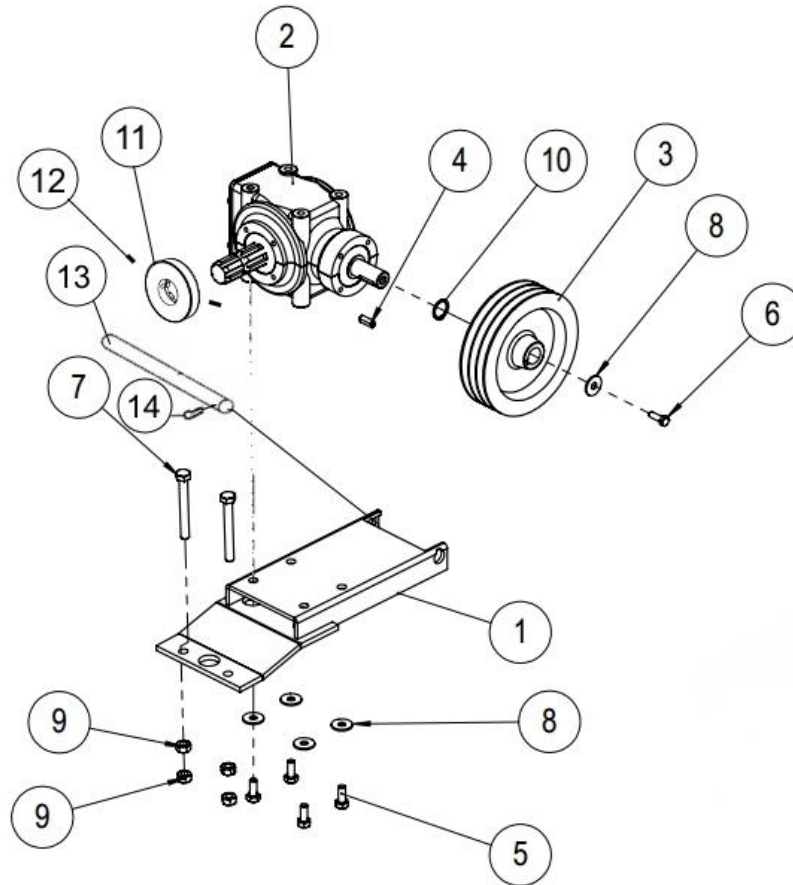




**1.18 Power transmission parts list**

Number	Name	Part number	Dimensions	Pcs
1	Drive shaft for the pump	10073		1
2	Wedge	10526	7 x 8 - 35	1
3	Wedge	10073a	7 x 8 - 78	1
4	Bearing UCP 207	95058		2
5	Hex screw	96149	M12 x 45	4
6	Sesco washer	96253	M12	6
7	Nyloc nut	96212	M12	4
8	V-belt pulley 3 A 88.5	95102		1
9	V-belt pulley A 180	95103		1
10	Washer	10492	D40 / 11	2
11	Hex screw	96139	M10 x 25	2
12	V-belt A-38	95081		3
13	Switch, machine side	95111		1
14	Switch, pump side	95112		1
15	Clutch rubber	95113		1
16	Sesco washer	96252	M10	1
17	Hydraulic pump PLP 20.16	97320		1
18	Hex socket screw	96036	M8 x 35	4
19	Washer	96057	M8	8
20	Nut	96196	M8	4
21	Curve	95315	3/4" x 3/4"	1
22	Suction hose nipple	10202		1
23	Hose tie	96182	25 - 40	2
24	Suction hose	97286		1
25	USIT	97213	1/2"	1
26	Double nipple	97204	1/2" x 1/2"	1
27	Parts assembly on top of pump	37457		1
28	Hydraulic hose straight/90	97017	1,900 x 1/4" x 3/8"	1
29	Hydraulic hose 90/90 180 degrees	97016	1,750 x 1/2"	1

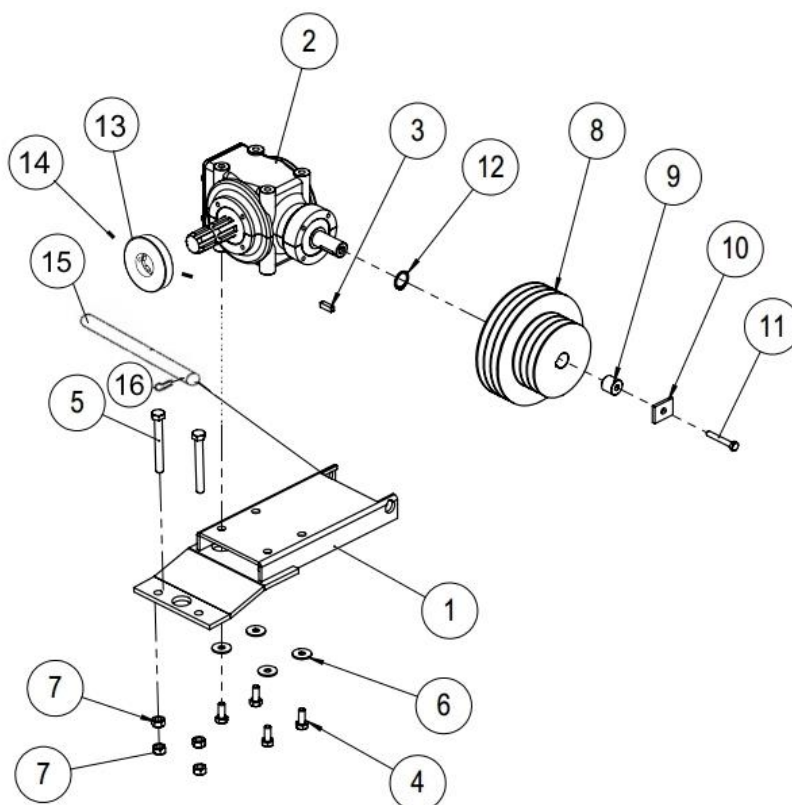
### 1.19 Angle transmission tr (10745)



### 1.20 Angle transmission tr parts list (10745)

Number	Name	Part number	Dimensions	Pcs
1	Angle gear bed	10121		1
2	Angle transmission 2021	95172		1
3	V-belt pulley 3A 180	95100		1
4	Wedge	10530	8 x 7 - 25	1
5	Hex screw	96139	M10 x 25	4
6	Hex screw	96130	M8 x 20	1
7	Hex screw	96141	M12 x 100	2
8	Washer	96406	M10	5
9	Nut	96200	M12	4
10	Retaining ring	96043	25 x 1.2	1
11	V-belt pulley A 80, bore pulley	95104		1
12	Socket set screw	96228	M8 x 8	2
13	Angle transmission shaft	10165		1
14	Retaining ring	96040	20 x 1.2	1

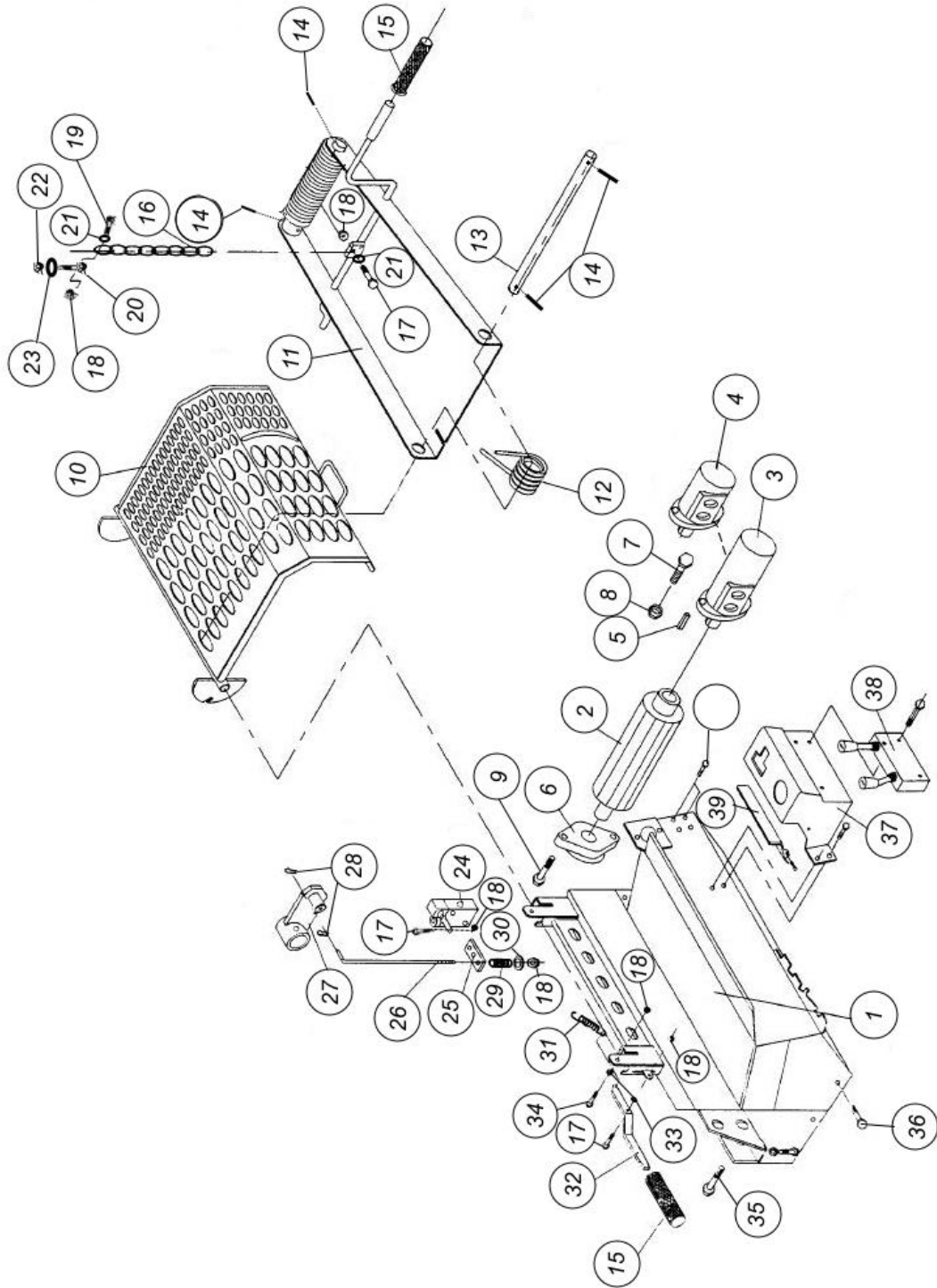
### 1.21 Angle transmission electricity (10746)



### 1.22 Angle transmission electricity, parts list (10746)

Number	Name	Part number	Dimensions	Pcs
1	Angle gear bed	10121		1
2	Angle transmission 2021	95172		1
3	V-belt pulley 3A 180	95100		1
4	Wedge	10530	8 x 7 - 25	1
5	Hex screw	96141	M12 x 100	2
6	Washer	96406	M10	4
7	Nut	96200	M12	4
8	V-belt pulley 3A 188 / 3A 125	95105		1
9	Angle transmission shaft extension	10182a		1
10	Belt pulley washer	10182b		1
11	Hex screw	96125	M8 x 55	1
12	Retaining ring	96043	25 x 2	1
13	V-belt pulley A 80, bore pulley	95104		1
14	Socket set screw	96228	M8 x 8	2
15	Angle transmission shaft	10165		1
16	Retaining ring	96040	20 x 1.2	1

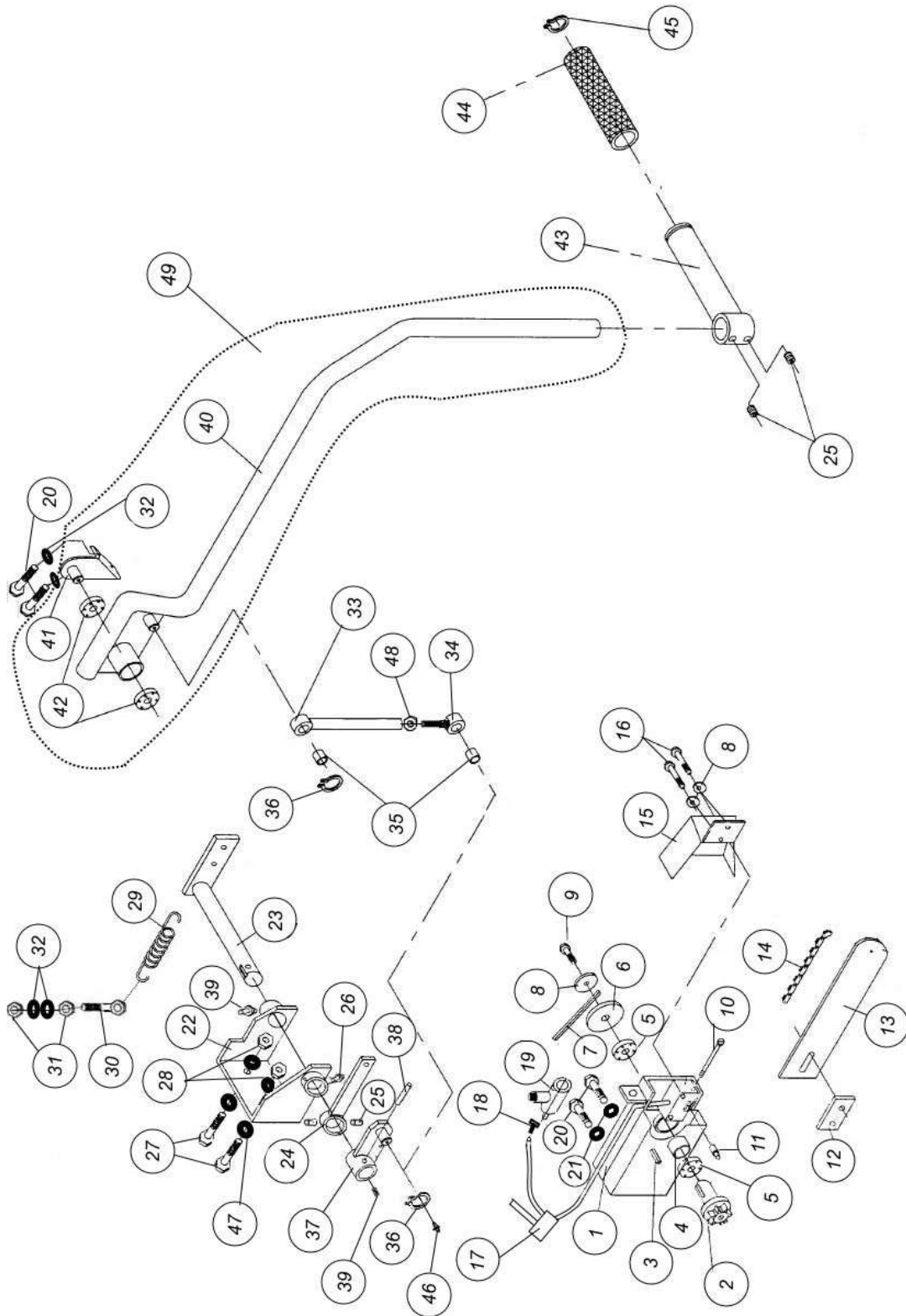
### 1.23 In-feed table



**1.24 In-feed table parts list**

Number	Name	Part number	Dimensions	Pcs
1	In-feed table frame	10052		1
2	In-feed table	50000467		1
3	Hydraulic motor 400, lever	97309		1
4	Hydraulic motor 160, easy	97307		1
5	Hydraulic motor wedge	97371	8 x 7 x 32	1
6	Bearing UCFL 205	95057		1
7	Hex socket screw	96413	M12 x 35	2
8	Nyloc nut	96218	M12	2
9	Hex screw	96144	M12 x 20	2
10	Front cage	10350		1
11	Log clamp	10390		1
12	Torsion spring	95027	5 mm	1
13	Log press fastening pin	10388	25 x 342	1
14	Spring pin	96077	8 x 40	4
15	Handle	95034	22 x 120	2
16	Chain	10657	6 x 340	1
17	Hex screw	96164	M8 x 25	3
18	Nyloc nut	96217	M8	4
19	Hex screw	96131	M8 x 30	1
20	Eye bolt	96338	M10 x 90	1
21	Washer	96057	M8	2
22	Nyloc nut	96067	M10	1
23	Washer	96049		1
24	Valve, spring	97402		1
25	Valve plate	37035		1
26	Connecting rod	10162		1
27	Blade actuation joint	10369		1
28	Cotter pin	96246	3.2 x 32	
29	Pressure spring	95015	2.5 x 20 x 38	1
30	Washer	96085	M8	1
31	Draw spring	95391	0.9 x 9.8 x 40	1
32	Locking plate for the front cage open position	10341		1
33	Nut	96057	M8	3
34	Hex screw, partial thread	96123	M8 x 40	2
35	Hex screw	96150	M12x60	1
36	Hex screw	96138	M10 x 20	3
37	Valve mount Easy	10234		1
38	Valve block	10592		1
39	Valve mount protective plate	10235b		1

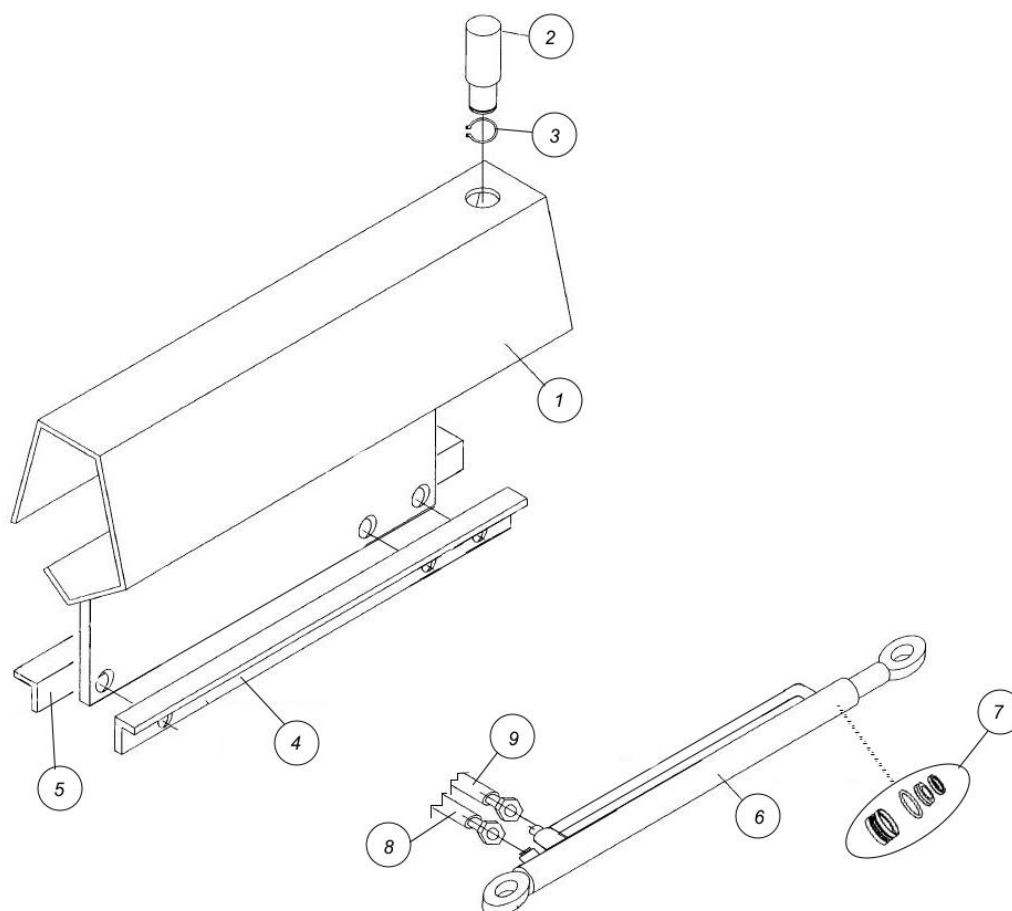
### 1.25 Cutting



## 1.26 Cutting parts list

Number	Name	Part number	Dimensions	Pcs
1	Saw drive end frame	37042		1
2	Saw drive shaft	10580		1
3	Wedge	37077	7 x 8 x 15	1
4	Intermediate bushing	10257		1
5	Bearing 6205-2zr FAG	95052		2
6	V-belt pulley 1 A 80	10039		1
7	V-belt XPA 850	95089		1
8	Washer	96082	M8	1
9	Hex screw	96130	M8 x 20	3
10	Slot head screw	96266	M6 x 60	1
11	Tightening pin for the flange	10046		1
12	Saw bar fastening plate	10044		1
13	Saw bar	95147	16" 325 / 1.5	1
14	Saw chain	95148	66 loops 325 1.5	1
15	Belt protector for the blade actuator	10152		1
16	Hex screw, hard	96307	M8 x 55	2
17	Automatic saw lubrication valve	10585		1
18	Hose nipple	97281	8 mm	1
19	Needle valve, adjustment valve	97280		1
20	Hex screw	96139	M10 x 25	2
21	Washer	96064	M10	2
22	Saw drive end fastening plate	10083		1
23	Saw drive shaft	37085		1
24	Arm of the triggering lever	10014		1
25	Socket set screw	96228	M8 x 8	4
26	Lubrication nipple 45 degrees	96274	M8 x 1	1
27	Hex screw	96146	M12 x 30	2
28	Nyloc nut	96218	M12	2
29	Draw spring	95403	3.5 x 30 - 180	1
30	Eye bolt	96255	M10 x 60	1
31	Nut	96199	M10	2
32	Washer	96049		2
33	Adjustment rod	10395		1
34	Rod adjuster	10394		1
35	Slide bearing BRM 10	95062		2
36	Retaining ring	96038	16 x 1	2
37	Blade actuation joint	10369		1
38	Spring pin	96078	8 x 50	1
39	Lubrication nipple	96276	M8 x 1	2
40	Operating lever	10360		1
41	Operating lever fastening plate	10363		1
42	Bearing 6203	95048		2
43	Handle	10510		1
44	Handle, cover	95238	22 x 125	1
45	Retaining ring	96040	20 x 1.2	1
46	Lubrication nipple	96273	M6 x 1	1
47	Sesco washer	96253	M12	4
48	Nut		M12	1
49	Saw actuation lever	10372		1

## 1.27 Splitting

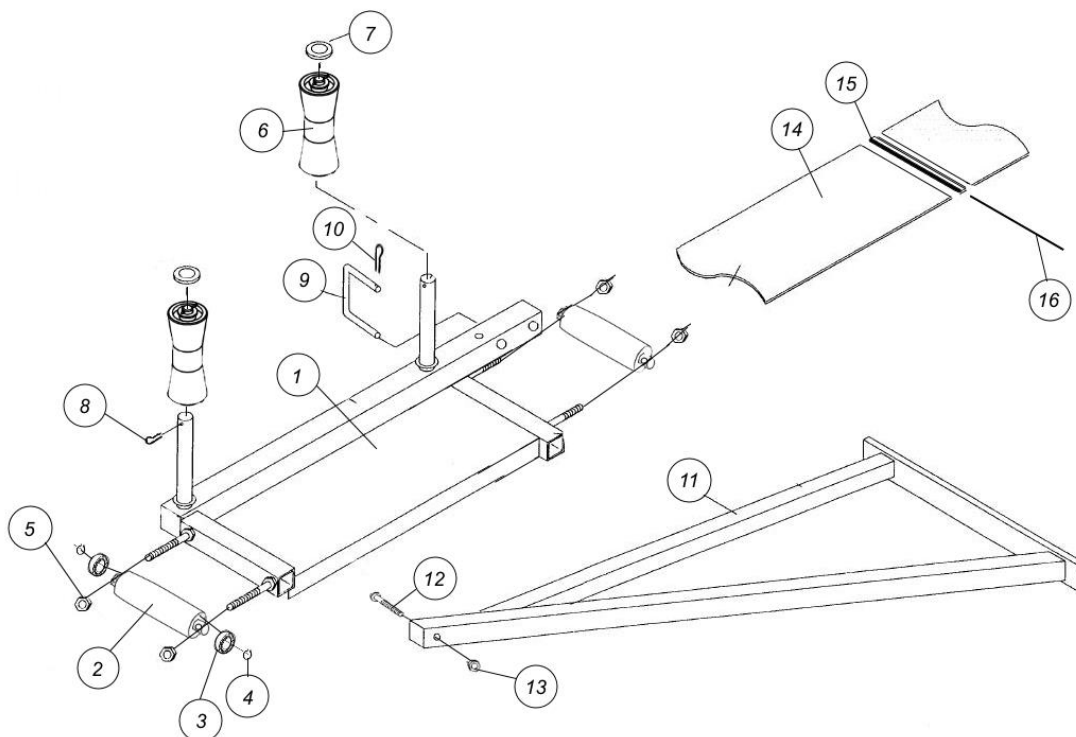


## 1.28 Splitting function parts list

Number	Name	Part number	Dimensions	Pcs
1	Splitting slide	37004		1
2	Cylinder pin	37013b		1
3	Retaining ring	96044	30 x 1.5	1
4	Slide fastening plate	37007b		1
5	Slide fastening plate, with washer	37008		1
6	Cylinder	37028	70 / 45 - 710	1
7	Seal kit	97297	70 / 45	1
8	Hydraulic hose straight/90	97031	800 x 3/4"	1
9	Hydraulic hose straight/90	97014	750 x 1/2"	1



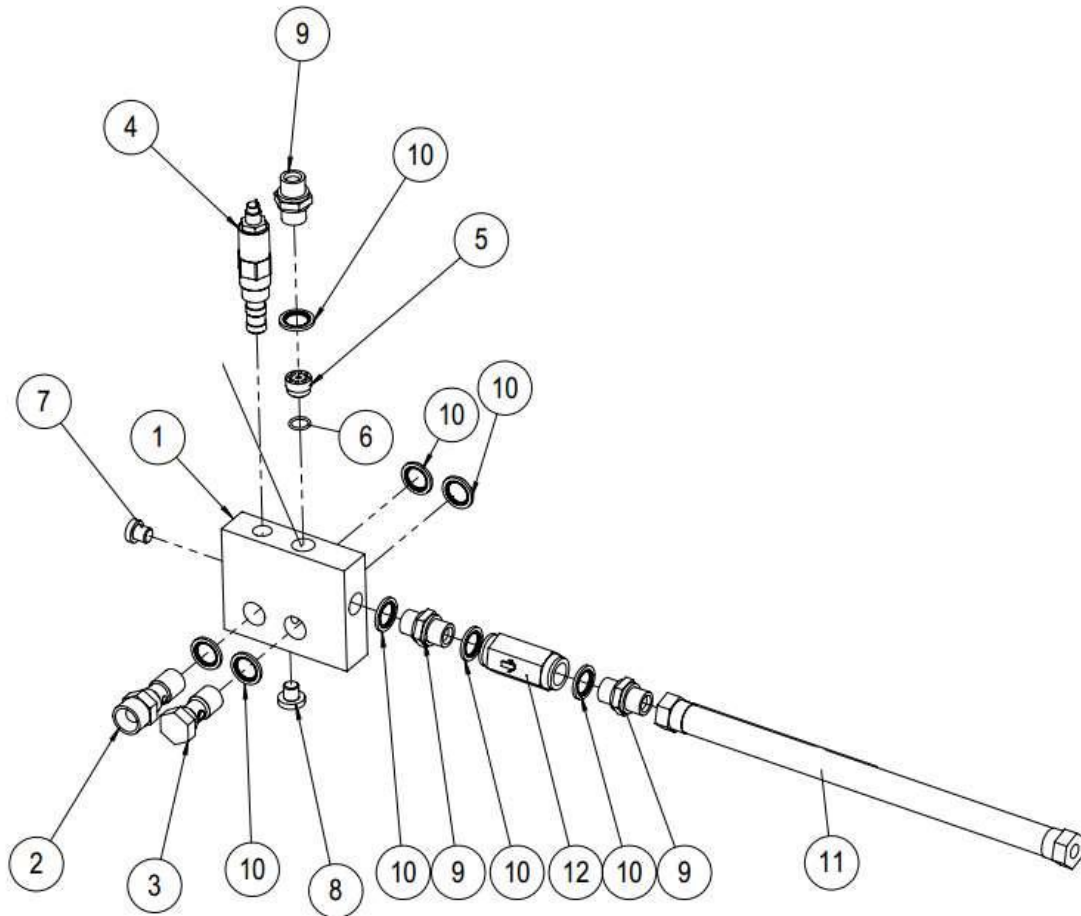
### 1.29 In-feed conveyor extension



### 1.30 In-feed conveyor extension parts list

Number	Name	Part number	Dimensions	Pcs
1	In-feed conveyor extension	10159		1
2	Tensioning roller	10160		2
3	Groove ball bearing 6205 2rs FK	95050		4
4	Retaining ring	96042	25 x 1.2	4
5	Nut	96200	M12	8
6	Keel roller	95001	185	2
7	Washer	96053	M20	2
8	Cotter pin	96246	3.2 x 32	2
9	Locking pin	10259		1
10	Hitch pin	96208	3	1
11	In-feed conveyor support	10262		1
12	Hex screw, partial thread	96110	M12 x 70	1
13	Nyloc nut	96218	M12	1
14	In-feed conveyor belt	95128		1
15	Connecting rail, Alligator	95642		14
16	Connector wire	95678		1

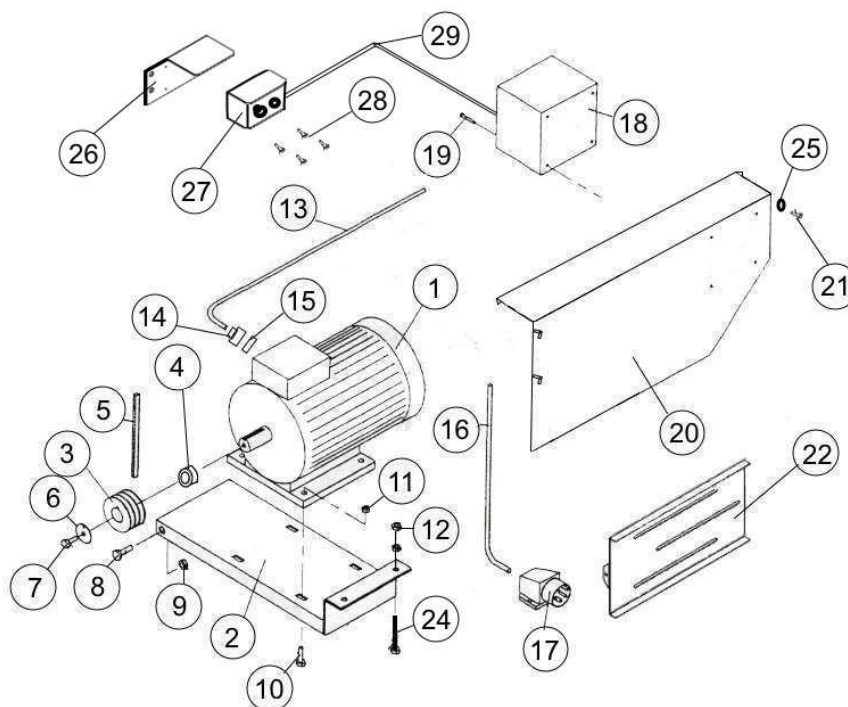
### 1.31 Automatic speed valve (37360)



### 1.32 Automatic speed valve parts list (37360)

Number	Name	Part number	Dimensions	Pcs
1	Automatic speed valve frame	37355		1
2	Banjo bolt with nipple	37323		1
3	Banjo bolt	37353		1
4	Adjustment cartridge ps10-32	97412		1
5	Rotatable check valve	97437		1
6	O ring			1
7	Plug	97259	1/4" ext.	1
8	Plug	97260	3/8" ext.	1
9	Double nipple	97204		3
10	USIT	97213	1/2"	8
11	Hydraulic hose straight int./straight int.	97099	650 x 1/2"	1
12	Check valve	97252	1/2"	1

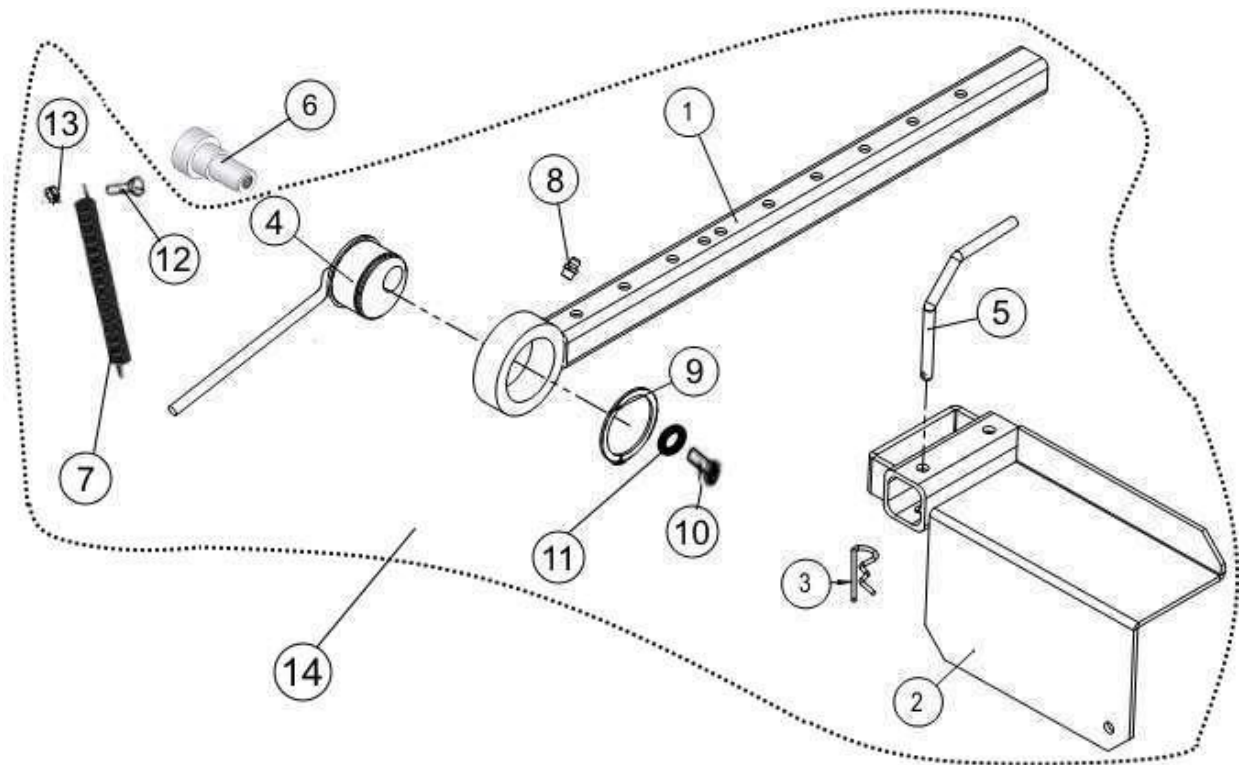
### 1.33 Parts list of the electric motor assembly



### 1.34 Parts list of the electric motor assembly

Number	Name	Part number	Dimensions	Pcs
1	Electric motor 7.5 kW B35	95038		1
2	Electric motor bed	10180		1
3	V-belt pulley 3 108	95101		1
4	Support bushing	50000136	D50/38 L=32	1
5	V-belt A-36	95080		3
6	Washer	10183d	d50 / 13 s=4mm	1
7	Hex screw	96147	M12 x 35	1
8	Hex screw	96146	M12 x 30	2
9	Nyloc nut	96218	M12	2
10	Hex screw	96097	M10 x 35	4
11	Nyloc nut	96067	M10	4
12	Hex nut	96200	M12	4
13	Rubber cable	95164	7 x 1.5 – 2,100 mm	1
14	Adjustment bushing	95425	M32/M25	1
15	Gland bushing	95271	M25	1
16	Rubber cable	95165	5 x 2.5 – 3,000 mm	1
17	Wall power socket 32A	95163		1
18	Autom. Y/D starter 7.5 kW	95152		1
19	Slot head screw	96284	M4 x 16	4
20	Splitting valve guard	10187		1
21	Hex screw	96160	M8 x 16	1
22	Slide plate for the cardan shaft guard	10503		1
23	Slide plate washer	10800	D25/8 - 35	3
24	Hex screw	96170	M12 x 100	2
25	Washer	96064	M10	1
26	Remote starter fastening frame	10606		1
27	Remote starter	95558		1
28	Slot head screw	96284	M4 x 16	4
29	Rubber cable	95166	4 x 1.5mm	2.5 m

### 1.35 Log length limiter



### 1.36 Log length limiter parts list

Number	Name	Part number	Dimensions	Pcs
1	Log length limiter pipe	10196		1
2	Log length limiter	10063		1
3	Hitch pin	96208		1
4	Eccentric lever	10203		1
5	Locking pin	10065		1
6	Log length limiter fastening shaft	10061		1
7	Draw spring	95028	2 x 15 L=150	1
8	Lubrication nipple	97276	M8 x 1	1
9	Retaining ring	96046	50 x 2	1
10	Hex screw	96138	M10 x 20	1
11	Washer	96064	M10	1
12	Hex screw	96131	M8 x 30	1
13	Hex nut	96196	M8	1
14	Log length limiter complete	10062		1