

Hakki Pilke Roller

MANUAL AND SPAREPARTSBOOK



The operator must read and understand these instructions before operating the machine!

HAKKI PILKE / Maaselän Kone Oy
Valimotie 1, FI-85800 Haapajärvi, FINLAND
tel. +358 8 7727 300
info@hakkipilke.fi, www.hakkipilke.fi

Table of contents

1. Basic information and responsibilities.....	4
1.1. Introduction.....	4
1.2. Purpose of use.....	5
1.3. Warning symbols.....	5
1.4. Safety instructions.....	5
1.5. Operator's responsibilities	6
1.6. Operating conditions.....	6
1.7. Guarantee terms	6
2. Assembling the machine.....	7
2.1. Roller with divider	7
2.2. Roller with conveyor	8
2.3. Log guides	10
3. Operating the Roller	11
3.1. Hydraulic drive	11
3.2. Electrical drive	11
3.3. Adjusting firewood throughput rate	12
4. Maintenance procedures.....	12
5. Spare parts	13
6. Guarantee terms.....	26
EC Declaration of Conformity for the machine.....	27

1. Basic information and responsibilities

1.1. Introduction

This manual is intended for operators with the appropriate expertise. The operator is required to have the general knowledge and skills needed in normal situations. For example, a person purchasing a tractor-powered machine is expected to be able to operate the tractor's cardan shaft drive.

Study the manual thoroughly before installing the machine and beginning operation. In addition, familiarise yourself with the controls and the emergency stop mechanism before operating the machine. Additional information on our company's products is available on our website at www.hakkipilke.fi.

NOTE! **Always keep this manual in the immediate vicinity of the machine.**

1.2. Purpose of use

The Roller and its conveyor are accessories for Hakki Pilke firewood processors. Using the machine for other purposes or attaching it to other machines is prohibited.

1.3. Warning symbols

 <p>Forklift lifting point</p>	 <p>The conveyor's danger zone extends 5 meters from the conveyor</p>	 <p>Disconnect the machine from its power source before conducting maintenance</p>
---	--	---

1.4. Safety instructions

General provisions and restrictions

- ❑ The machine is intended solely for cleaning firewood fed from an attached Hakki Pilke firewood processor or loaded by a loader.
- ❑ The firewood cleaner and conveyor's danger zone extends 5 meters from the sides and away from the conveyor.
- ❑ Do not remove any safety devices from the machine.

Operator

- ❑ Every machine operator must read the entire manual thoroughly.
- ❑ Always use eye protection and hearing protection.
- ❑ Always use safety footwear.
- ❑ Always use work gloves.
- ❑ Do not wear loose or hanging clothing.

Before use

- ❑ Set up the Roller and the conveyor in the operating position before turning on the machine.
- ❑ Ensure that no unauthorised persons are in the working area.
- ❑ Operate the machine on a sufficiently solid and even surface.
- ❑ Operate the machine only in adequate lighting.
- ❑ Always check that all the guards and covers are undamaged and attached.
- ❑ Always check the condition of the power cables.
- ❑ Always check that the hydraulic hoses and components are undamaged.
- ❑ Ensure that the machine is standing firmly in place before starting operation.

During operation

- ❑ Keep the working area clear of unnecessary items.
- ❑ Always stop the machine and disconnect the supply cable before conducting maintenance.
- ❑ Danger! Stay clear of moving parts.

1.5. Operator's responsibilities

- ❑ The Roller may be used only for cleaning firewood as an accessory to a Hakki Pilke firewood processor or when loaded using a loader.
- ❑ **All of the Roller's safety devices are necessary** for ensuring a sufficient level of safety.
- ❑ **The Roller's operator is responsible** for making sure that the safety devices are undamaged and that the machine has been adequately serviced before commencing operation.
- ❑ The operator is responsible for ensuring that the machine does not cause danger to others.
- ❑ Altering the Roller's structure is prohibited.
- ❑ Keep in mind that the operator is responsible for any accidents that may occur if safety devices have been removed from the machine.

1.6. Operating conditions

- ❑ Always place the machine on a level surface.
- ❑ Operate the machine only in adequate lighting.
- ❑ The optimal operating temperature range is approximately -20...+30 degrees C. There are no restrictions in regard to weather conditions.
- ❑ Make sure that there are no children or unauthorised persons in the working area.

1.7. Guarantee terms

The guarantee period is 12 months from the purchase date of the machine.

The guarantee covers

- ❑ Parts damaged in normal use due to faults in the material or workmanship.
- ❑ Reasonable repair expenses in accordance with the agreement between the seller or buyer and the manufacturer.
- ❑ Faulty parts will be replaced with new ones.

The guarantee does not cover

- ❑ Damage resulting from normal wear and tear, improper use or neglecting maintenance.
- ❑ Defects in a product to which the buyer has carried out or commissioned changes to the degree that the product can no longer be considered equivalent to the original product.
- ❑ Other potential costs or financial obligations resulting from the procedures mentioned above.
- ❑ Indirect costs and/or travel costs resulting from guarantee repairs.
- ❑ The guarantee for parts replaced during the guarantee period of the product expires at the same time as the product's guarantee.
- ❑ In guarantee matters, always contact the machine's seller.

2. Assembling the machine



Figure 1.

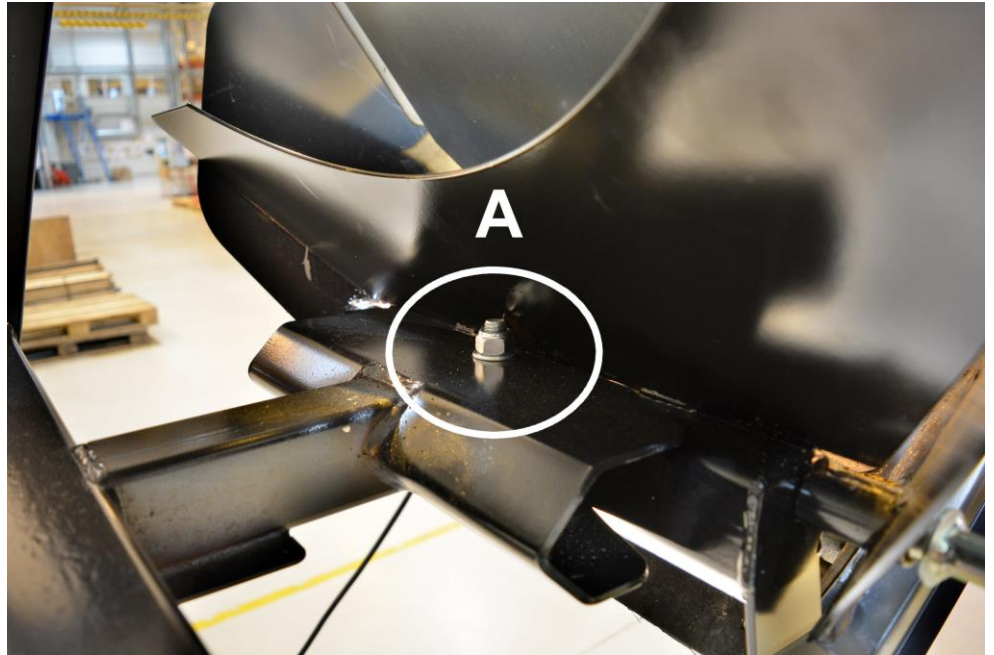
- Use a forklift with long forks to lift the Roller from the bottom of the frame to the desired operating height (Frame width 1,120 mm). Lock the legs into position using screws inserted through the hollow sections (1.)
- The Roller's angle (C) can be adjusted by adjusting the length of adjustment bar B. Lock the angle setting using the screws (2.)

2.1. Roller with divider

- Attach the divider to the firewood cleaner using hex screws A and B, as shown in Figures 2-3.
- Insert hex screws A (Figure 2.) through the same holes used to adjust the height of the legs.

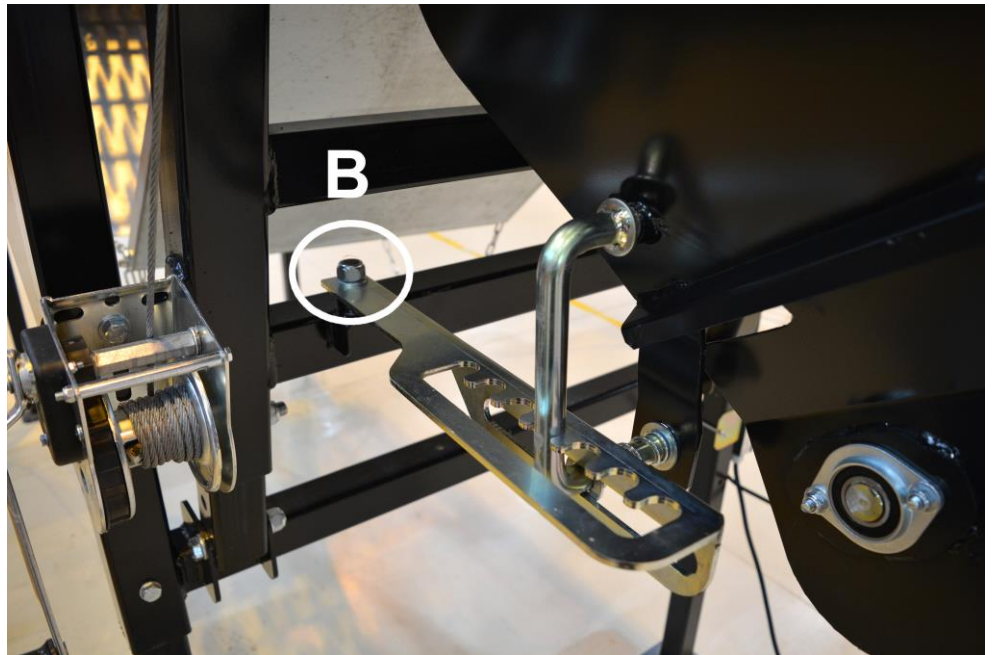
2.2. Roller with conveyor

Attach the conveyor to its support through hole A (Figure 2.)



(Figure 2.)

Attach the conveyor locking lever to its support from point B (Figure 3.)



(Figure 3.)

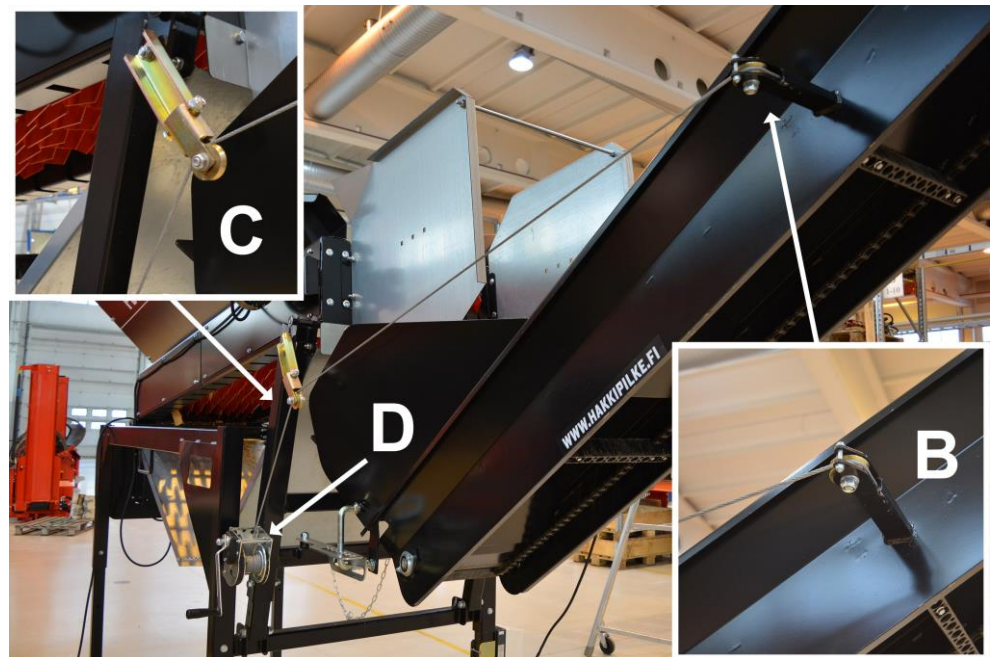
Attach the wire loop to screw A (Figure 5.).

Thread the wire through the conveyor and behind the rollers through pipe B (Figure 5.).



(Figure 5.)

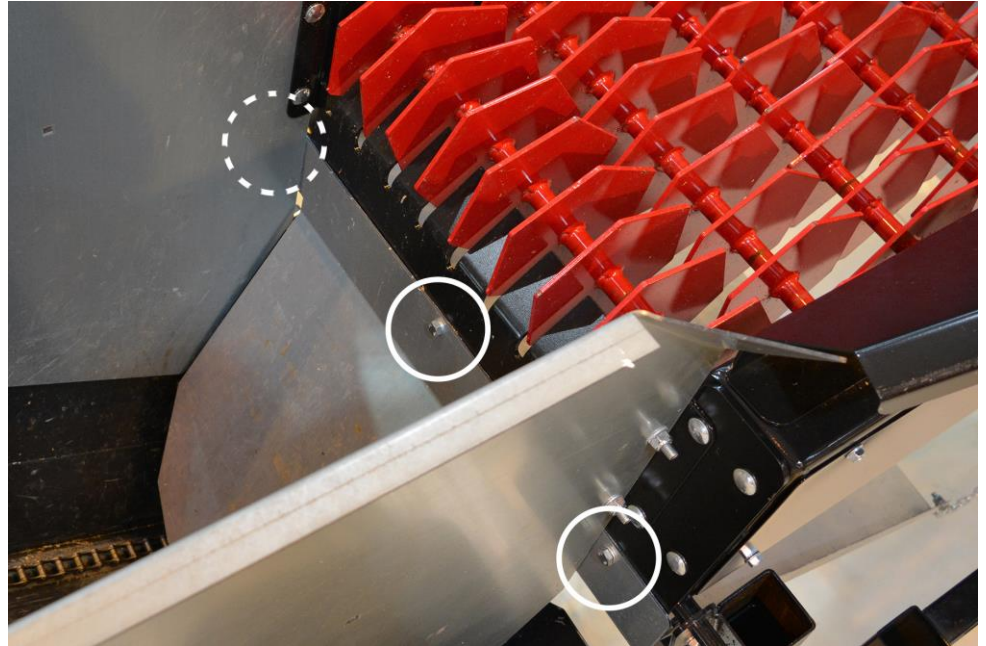
Thread the wire through roller C (Figure 6.) to winch D (Figure 6.).



(Figure 6.)

2.3. Log guides

Attach the lower log guide on top of the conveyor using three M10 hex screws (Figure 7.).

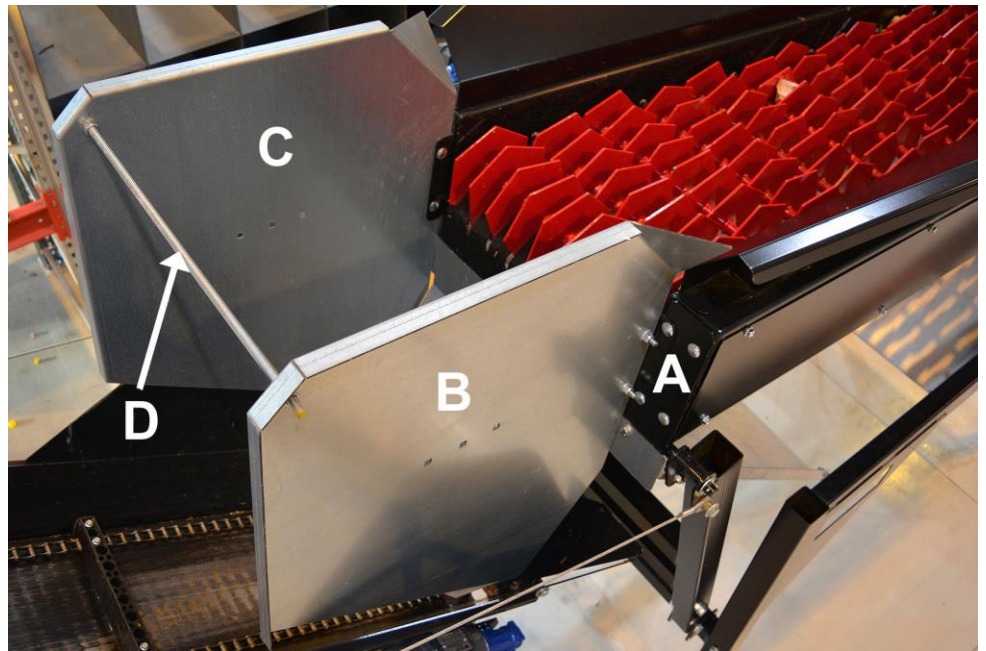


(Figure 7.)

Attach angle plates A to the frame using M10 hex screws (Figure 8.).

Attach side guides B and C to the angle plates. Make sure that the folded parts are facing outwards (Figure 8.).

Attach fastening plate D to the top edges of the side guides (Figure 8.).



(Figure 8.)

3. Operating the Roller

3.1. Hydraulic drive

- Connect the hydraulic hoses so that the hydraulic flow direction is correct.
- Adjust the rotating speed using the hydraulics' speed adjustment valve.

3.2. Electrical drive



(Figure 9.)

- Make sure that the rotation direction of the screen and the output conveyor are correct. If necessary, reverse the rotation direction by inverting the phase from the phase inverter located in the plug.
- Switch on the output conveyor and the screen before loading any wood into the Roller.
- Switch on the screen by turning the starter switch to the right.
- If the screen stops due to a jammed piece of firewood, etc., you can reverse it by turning the switch to the left. The switch cannot be locked in the reverse position.
- If the screen remains jammed for an extended period of time, the starter's thermal relay may trip. If this happens, turn the switch to the 0 position and reset the thermal relay by pressing the R button.
- When loading with a front loader, it is crucial that the Roller is only loaded with small amounts of firewood at a time. Loading the Roller with a large amount of firewood at once will reduce screening efficiency and may clog up the output conveyor.

3.3. Adjusting firewood throughput rate

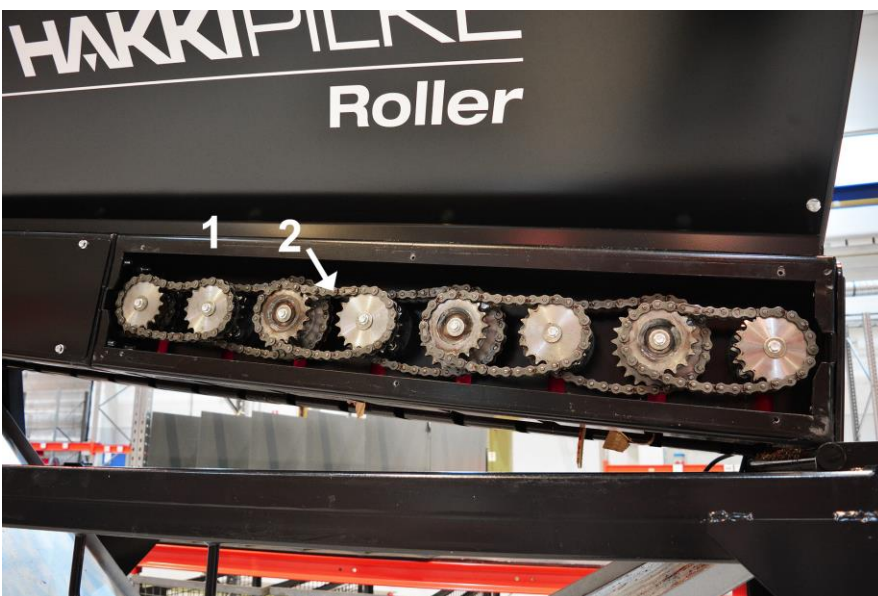
- The throughput rate of the firewood can be adjusted by adjusting the Roller's angle. (Figure 1.)
- In a hydraulic machine, the rotation speed of the screen and the output conveyor can be adjusted by adjusting the speed adjustment valves next to the hydraulic motor. There are separate valves for adjusting the screen and the conveyor.
- When loading with a front loader, it is crucial that the Roller is only loaded with small amounts of firewood at a time. Loading the Roller with a large amount of firewood at once will reduce screening efficiency and may clog up the output conveyor.

4. Maintenance procedures



(Figure 10.)

Lubricate the collar step bearings of the roller shafts (1) (Figure 10.) approximately every 100 operating hours.



(Figure 11.)

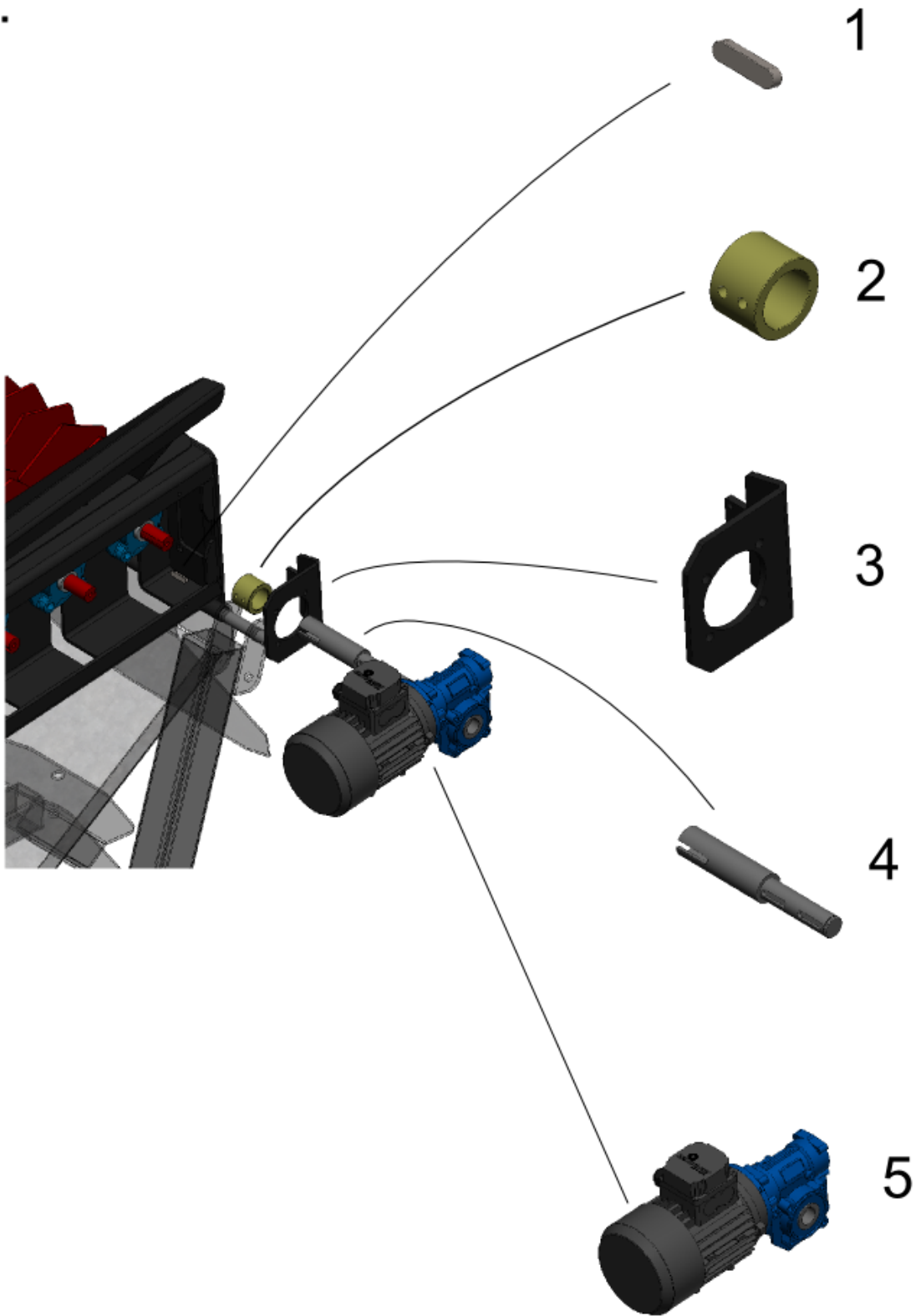
Lubricate the collar step bearings of the roller shafts (1) and the roller chains (2) approximately every 100 operating hours (Figure 11.).

5. Spare parts

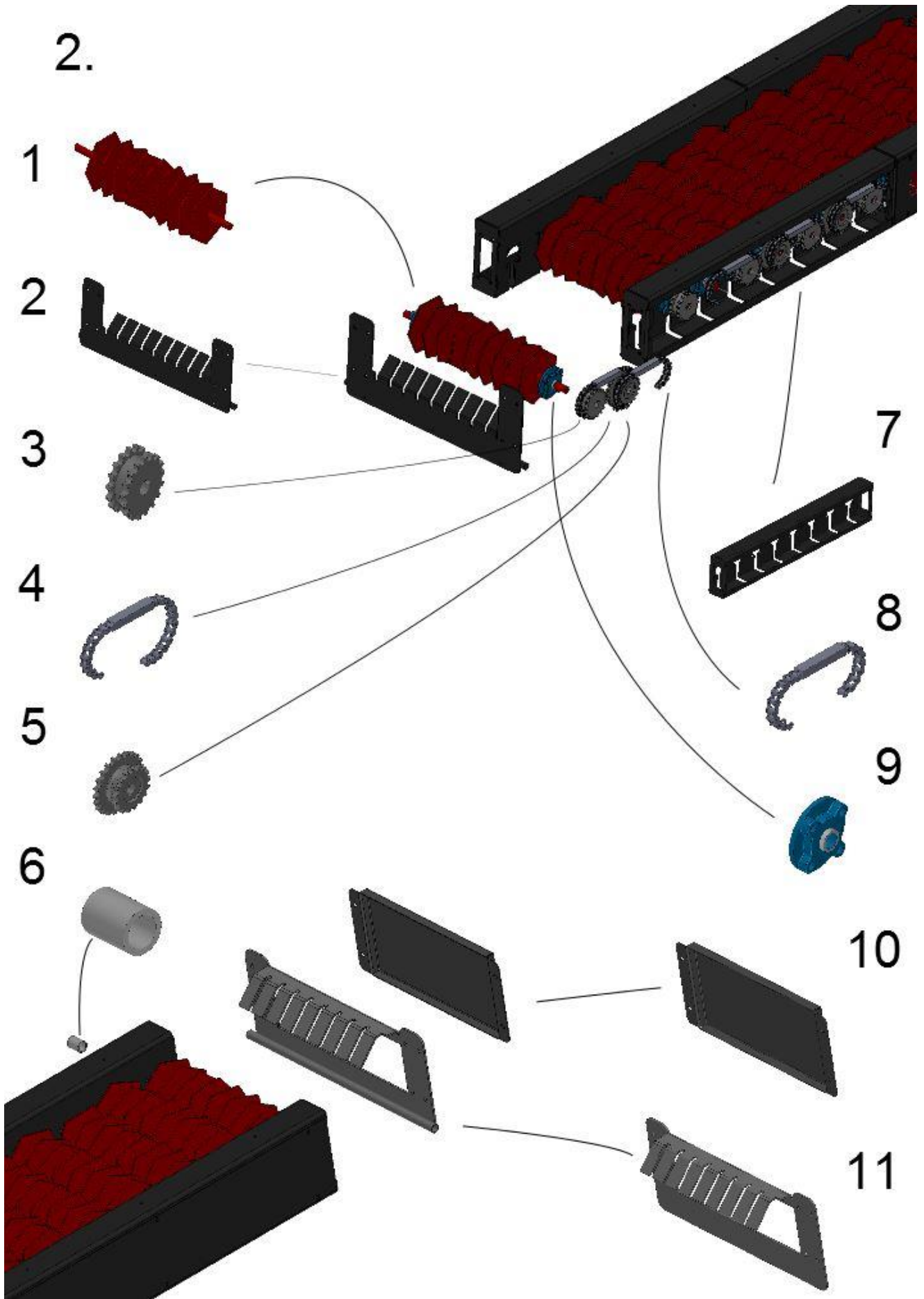
Ordering instructions

1. Find the figure that includes the part you need.
2. Check the part number from the figure.
3. Use the figure number and part number to find the order number in the parts list.
4. All orders must include the order number and the name of the part as well as the serial number and year of manufacture of the machine.

1.



Osa/ Part	Item No:	Order No:	Nimitys	Description	Kpl/ Qty
1			Tasakiila	Parallel key	1
2	K2604030		Holkki	Bushing	1
3	L2601271		Vaihteen alusta	Motor mount plate	1
4	K8722010		Väliakseli	Adapter shaft	1
5			Vaihdemoottori	Gear motor	1

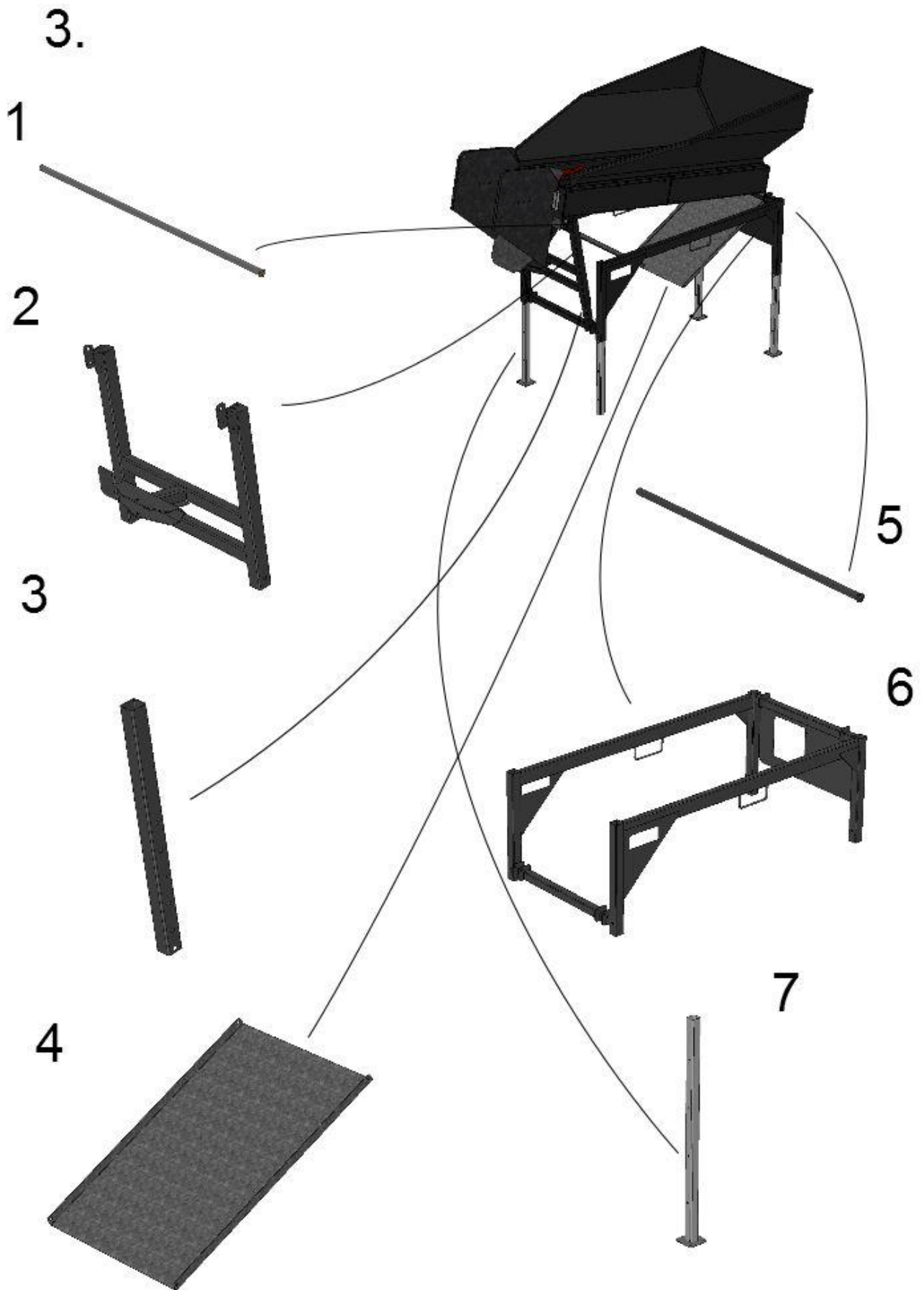


Hakki Pilke Roller

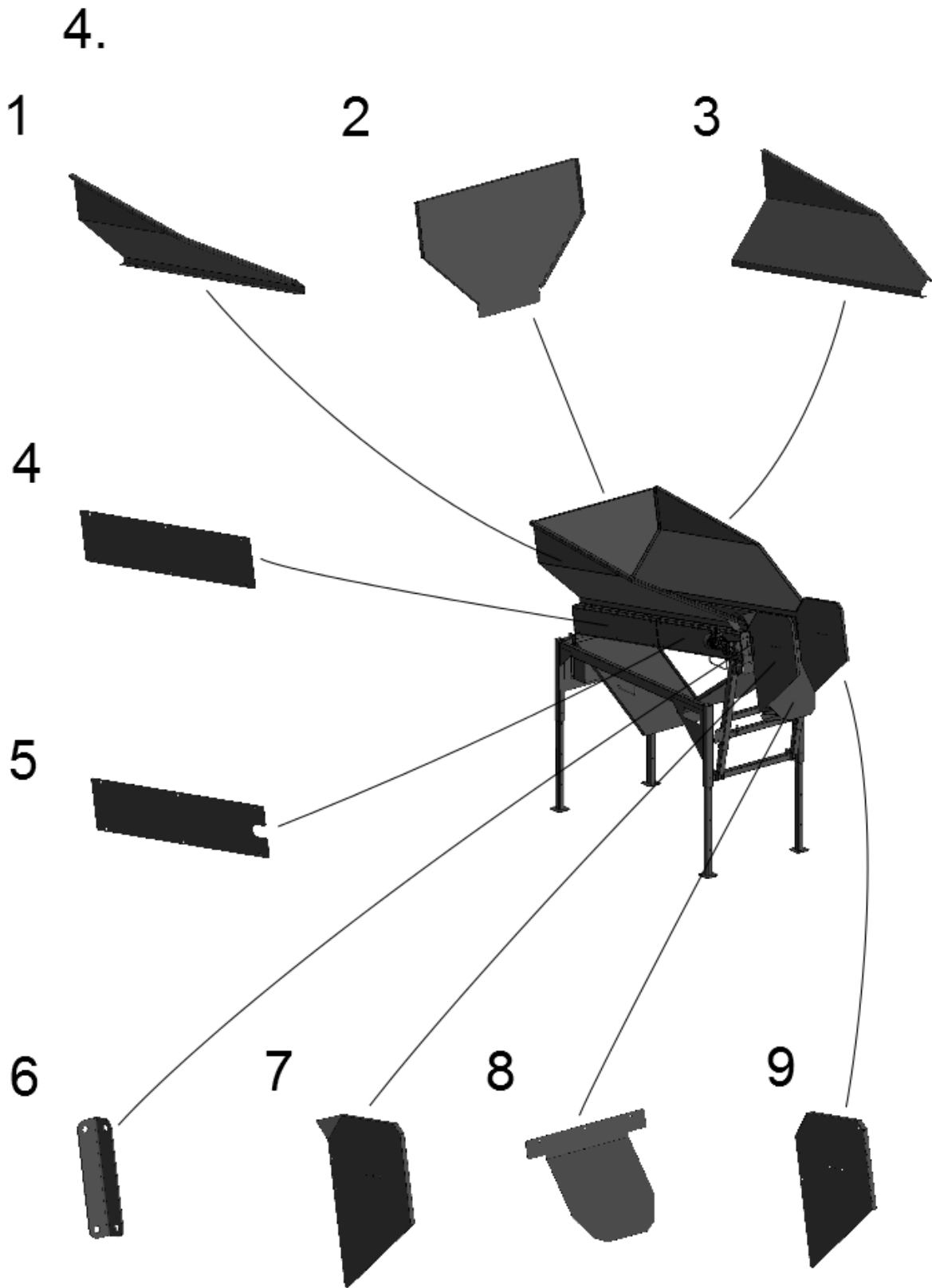
Original

Version 2

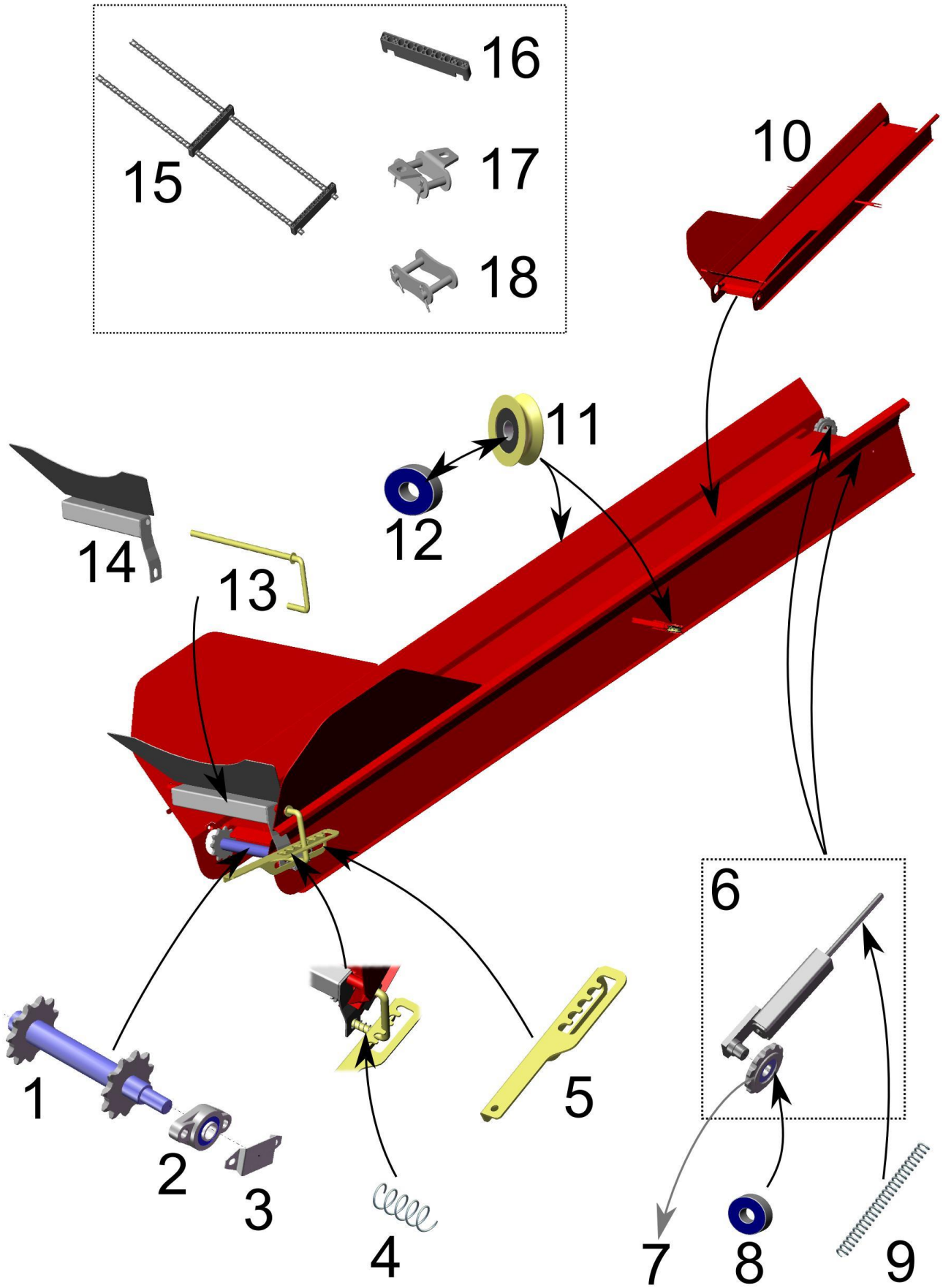
Osa/ Part	Item No:	Order No:	Nimitys	Description	Kpl/ Qty
1	8711000		Rulla	Roller	15
2	8713000		Pääty	Gable	1
3	K8710060		Ketjupyörä	Sprocket	8
4			Rullaketju	Chain	8
5	8714000		Ketjupyörä	Sprocket	
6	K8713030		Holkki	Bushing	1
7	8712000		Kylki	Side of the frame	4
8			Rullaketju	Chain	8
9	UCFC207		Laippalaakeri	Bearing unit	30
10	L8710040		Suoja	Cover Plate	1
11	L8713011		Päätylevy	Gable	1

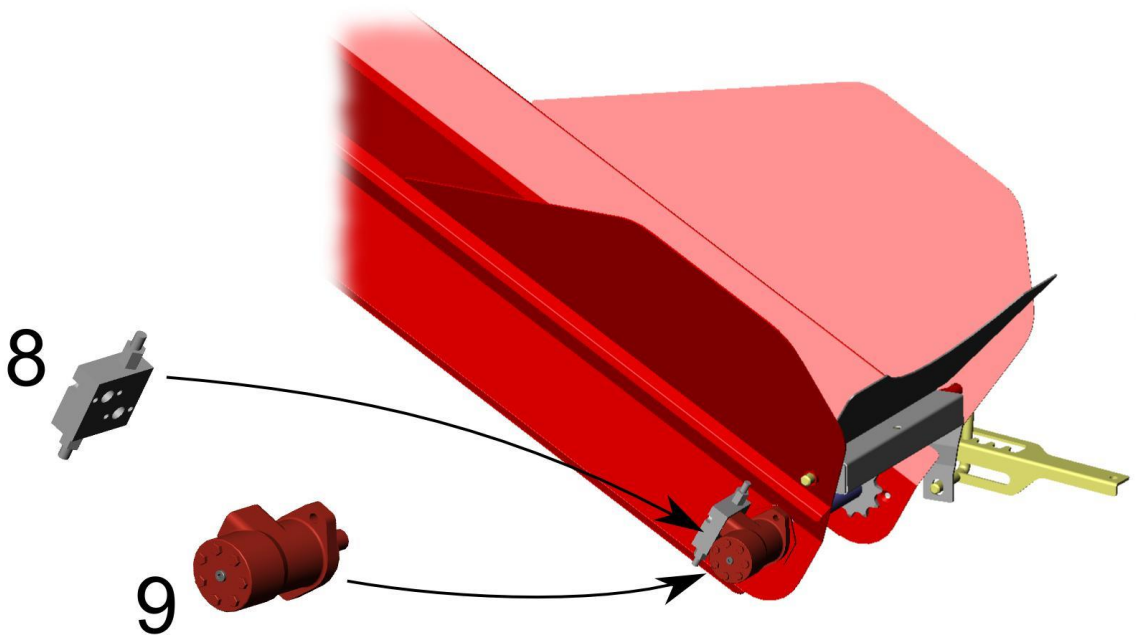
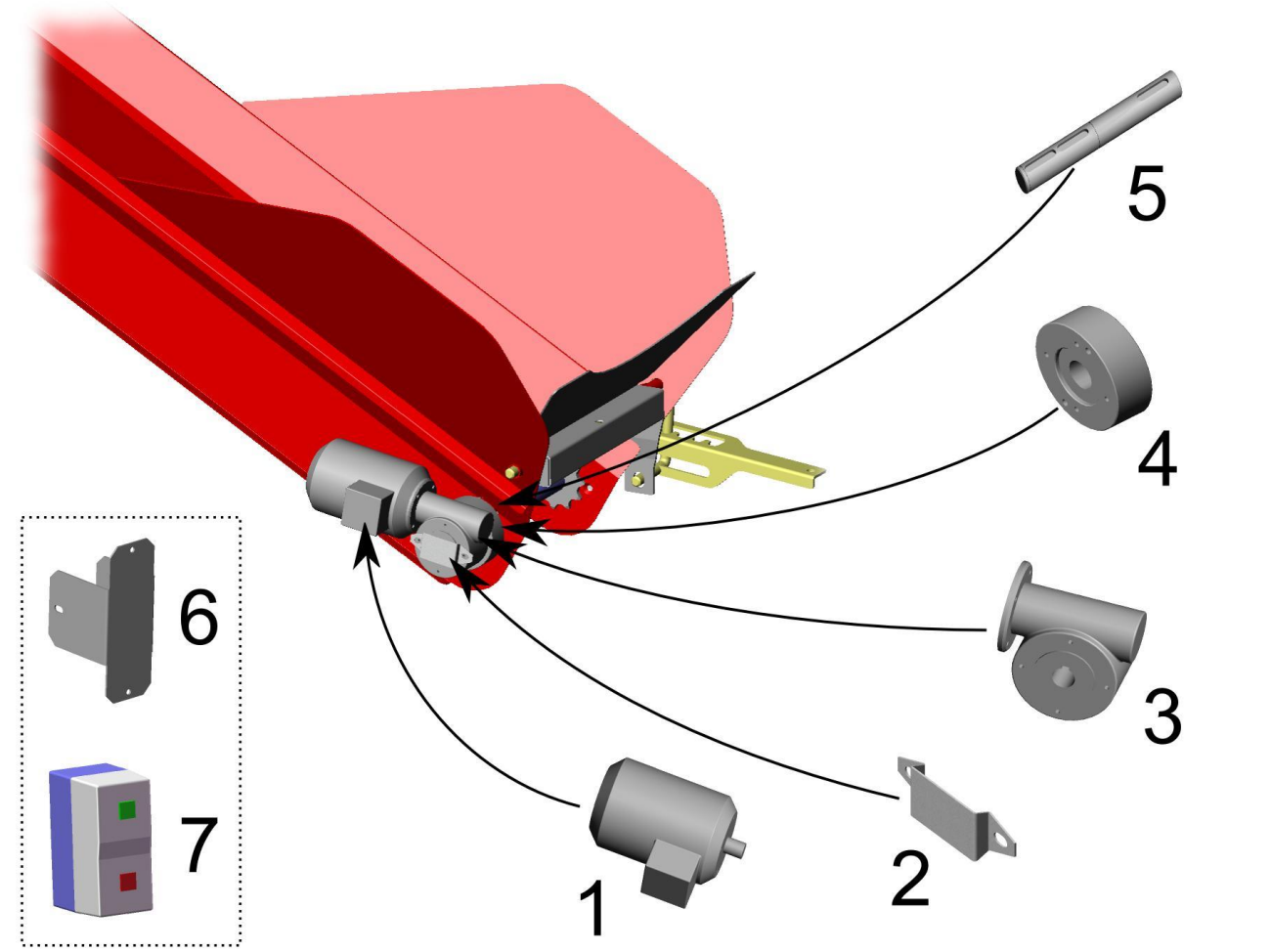


Osa/ Part	Item No:	Order No:	Nimitys	Description	Kpl/ Qty
1	8717000		Akseli	Shaft	1
2	8716000		Nostokehikko	Adjustment frame	1
3	K8710030		Putkipalkki	Square tube	2
4	L8710020		Roskapelti	chip guide	2
5	8718000		Akseli	Shaft	1
6	8715000		Runko	Frame	1
7	8719000		Jalka	Leg	4



Osa/ Part	Item No:	Order No:	Nimitys	Description	Kpl/ Qty
1	L8720010		Laita	Sideboard	1
2	L8710050		Takalaita	Tailboard	1
3	L8721010		Laita	Sideboard	1
4	L8722030		Suoja	Cover plate	3
5	L8722040		Suoja	Cover plate	1
6	L8710060		Kiinnike	Mount piece	2
7	L8710082		Sivupelti	Side plate	1
8	L8710071		Takalevy	Back plate	1
9	L8710081		Sivupelti 2	Side plate 2	1





Parts list

Figure	Part	Order No.	Name	Pcs	Note!
1	1	31918	Tightening plate	1	
1	2	31919	Debris hopper	2	Accessory
1	3	31920	Leg	4	
1	4	31921	Wheel axle	5	
1	5	31692	Solid rubber tyre 160/40	5	
1	6	31922	Extension	1	Accessory
1	7	31923	Screen	1	
1	8	31697	V-belt B112	2	
1	9	31924	Slope	1	
1	10	31925	Cleaner frame	1	
2	1	31698	Belt pulley, taperlock 132	1	
2	2	31700	Gear VSF P 050 FB 1/18 C71-B14A	1	EM
2	3	31926	Drive shaft	1	EM
2	4	31701	Gear A foot VSF P 050	2	EM
2	5	31927	Electric motor 0.55 kW 1500B14A	1	EM
2	6	32147	Starter 0.55kw	1	EM
2	7	31929	Starter base	1	EM
2	8	31930	Hydraulic motor mount	1	Hydr.
2	9	11779	Hydraulic motor WP80 (155)	1	Hydr.
2	10	10988	Flow controller DO6KRF050G12MM002	1	Hydr.
3	1	31931	Support	1	Divider accessory
3	2	31932	Slope	1	Divider accessory
3	3	31933	Handle	1	Divider accessory
3	4	31934	Lug	1	Divider accessory
3	5	31935	Roller cage	1	Conveyor accessory
3	6	14392	Roller wheel (inc. bearing)	1	Conveyor accessory
3	7	10060	Bearing 6201 2RS	1	Conveyor accessory
3	8	31936	Conveyor support	1	Conveyor accessory
3	9	11197	Winch Goliath 6AF	1	Conveyor accessory
3	10	10482	Wire	1	Conveyor accessory
4	1	13676	Drive shaft	1	Conveyor
4	2	10997	Bearing UCFL205	1	Conveyor
4	3	15301	Bearing cover	1	Conveyor
4	4	11375	Pressure spring 1.5x25x65	1	Conveyor
4	5	31937	Locking lever	1	Conveyor
4	6	11003	Idler sheave holder	2	Conveyor
4	7	11200	Idler	2	Conveyor
4	8	10596	Bearing 6205 2RS	2	Conveyor
4	9	11004	Spring 5.5x30x340	2	Conveyor

4	10	31938	Conveyor	1	Conveyor
4	11	14392	Roller wheel (inc. bearing)	2	Conveyor
4	12	10060	Bearing 6201 2RS	2	Conveyor
4	13	31939	Mounting clip	1	Conveyor
4	14	31940	Swivel beam	1	Conveyor
4	15	32387	Conveyor chain	2	Conveyor
4	16	11655	Cleat	7	Conveyor
4	17	11376	Cleat fastening	14	Conveyor
4	18	11199	Locking piece	2	Conveyor
5	1	31927	Electric motor 0.55 kW 1500B14A	1	Conveyor EM
5	2	15301	Bearing cover	1	Conveyor EM
5	3	32161	Gear VSF P 050 FB 1/10 C80-B14A	1	Conveyor EM
5	4	31941	Gear mounting	1	Conveyor EM
5	5	31926	Drive shaft	1	Conveyor EM
5	6	32147	Starter 0.55kw	1	Conveyor EM
5	7	31929	Starter base	1	Conveyor EM
5	8	11779	Hydraulic motor	1	Conveyor Hydr.
5	9	14989	Pressure relief valve, motor	1	Conveyor Hydr.

6. Guarantee terms

“Guarantee terms come into force when registered as a customer on the extranet service on our website.”

The guarantee is valid for the original buyer for 12 months, starting from the date of purchase, but for no more than 1,000 operating hours. In guarantee matters, always contact the machine’s seller before undertaking any procedures.

A guarantee claim must be issued to the seller in writing **immediately** upon discovery of a defect. If the defect concerns a damaged part or component, please send a photograph of the damaged part or component to the seller, if possible, so the fault can be identified. When submitting a guarantee claim, the buyer must always include the type and serial number of the machine in the claim and present a receipt that includes the date of purchase. Guarantee claims must be submitted to an authorised retailer.

The guarantee covers

- Parts damaged in normal use due to faults in the material or workmanship.
- Reasonable repair expenses in accordance with the agreement between the seller or buyer and the manufacturer. Faulty parts will be replaced with new ones. A faulty part or parts replaced due to a material fault must be returned to the manufacturer via the retailer.

The guarantee does not cover

- Damage caused by normal wear and tear (such as blades and belts), improper use or use contrary to the instruction manual.
- Damage caused by negligence of maintenance or storage procedures detailed in the instruction manual.
- Damage caused during transport.
- Cutting blades, V-belts and oil as well as normal adjustment, care, maintenance or cleaning procedures.
- Defects in a machine to which the buyer has carried out or commissioned structural or functional changes, to the degree that the machine can no longer be considered equivalent to the original machine.
- Other potential costs or financial obligations resulting from the procedures mentioned
- above.
- Indirect costs.
- Travel costs resulting from guarantee repairs.
- The guarantee for parts replaced during the guarantee period of the machine expires at the same time as the machine’s guarantee.
- The guarantee is void if the ownership of the machine is transferred to a third party during the guarantee period.
- The guarantee is void if any of the machine’s seals have been broken.

If a fault or defect reported by the customer is found not to be covered by the guarantee, the manufacturer has the right to charge the customer for the troubleshooting and possible repair of the fault or defect in accordance with the manufacturer's current price list. This guarantee certificate indicates our responsibilities and obligations in full and it excludes all other responsibilities.

EC Declaration of Conformity for the machine

(Machinery Directive 2006/42/EC, Appendix II A)

Manufacturer: Maaselän Kone Oy
Address: Valimotie 1, FI-85800 Haapajärvi, Finland

Name and address of the person who is authorised to compile the technical file:

Name: Timo Jussila Address: Valimotie 1, FI-85800 Haapajärvi, Finland

The aforementioned person assures that

Hakki Pilke Roller cleaning machine Serial number:

- is compliant with the applicable regulations of the Machinery Directive (2006/42/EC).

Location and date: HAAPAJÄRVI 7.11.2017

Signature: 
Anssi Westerlund
Managing Director