

HAKKI PILKE 1X37

FIREWOOD PROCESSOR

EASY

FUNCTIONS

- OPERATOR MANUAL AND SERVICE INSTRUCTIONS
- SPARE PARTS LIST

MACHINE EQUIPPED WITH *EASY* FUNCTIONS MUST NOT BE OPERATED BY A PERSON WHO IS NOT FAMILIAR WITH INSTRUCTIONS OF THE ACTUAL MACHINE

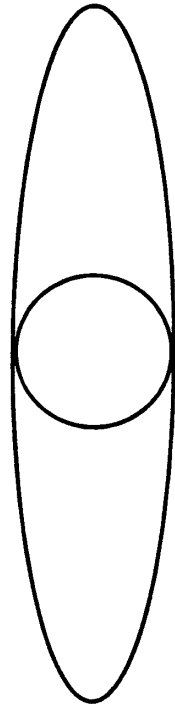
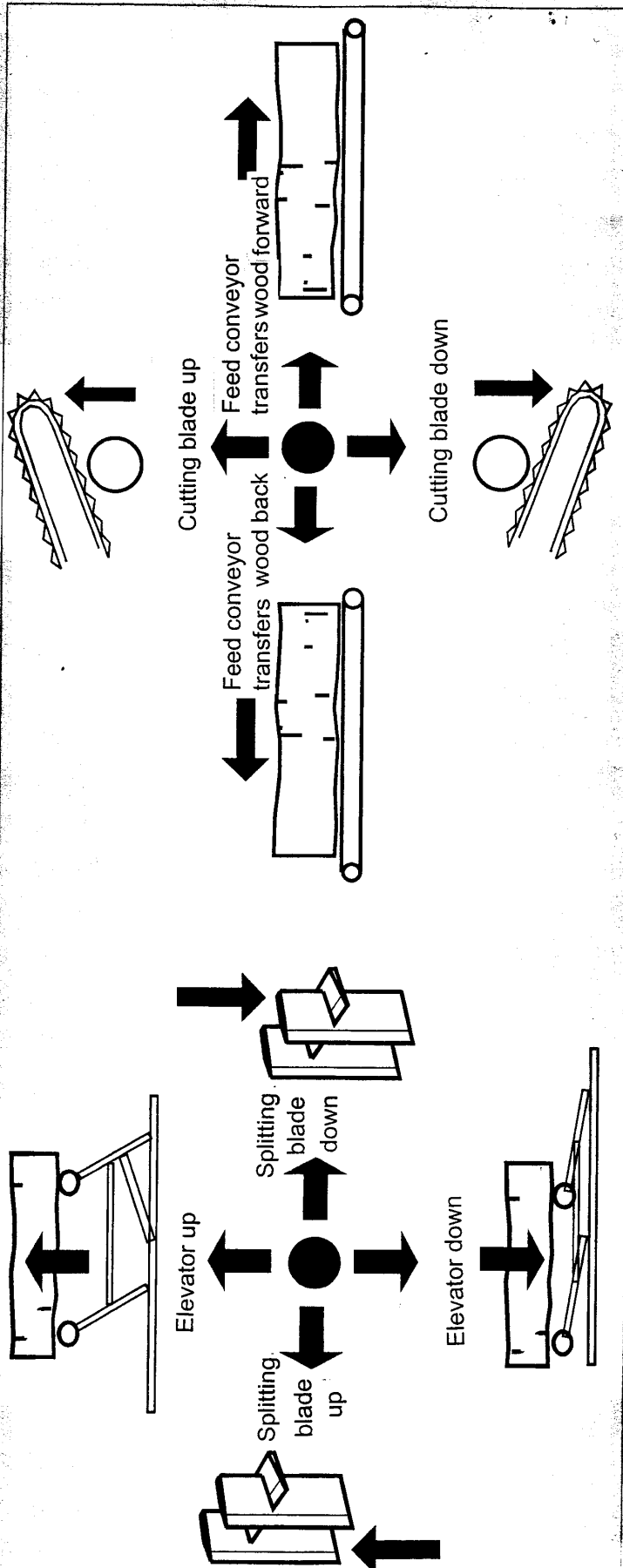
MAASELÄN KONE OY

www.maaselankone.fi

☎ +358 8 7727 300

FUNCTIONS OF THE EASY CONTROL PANEL

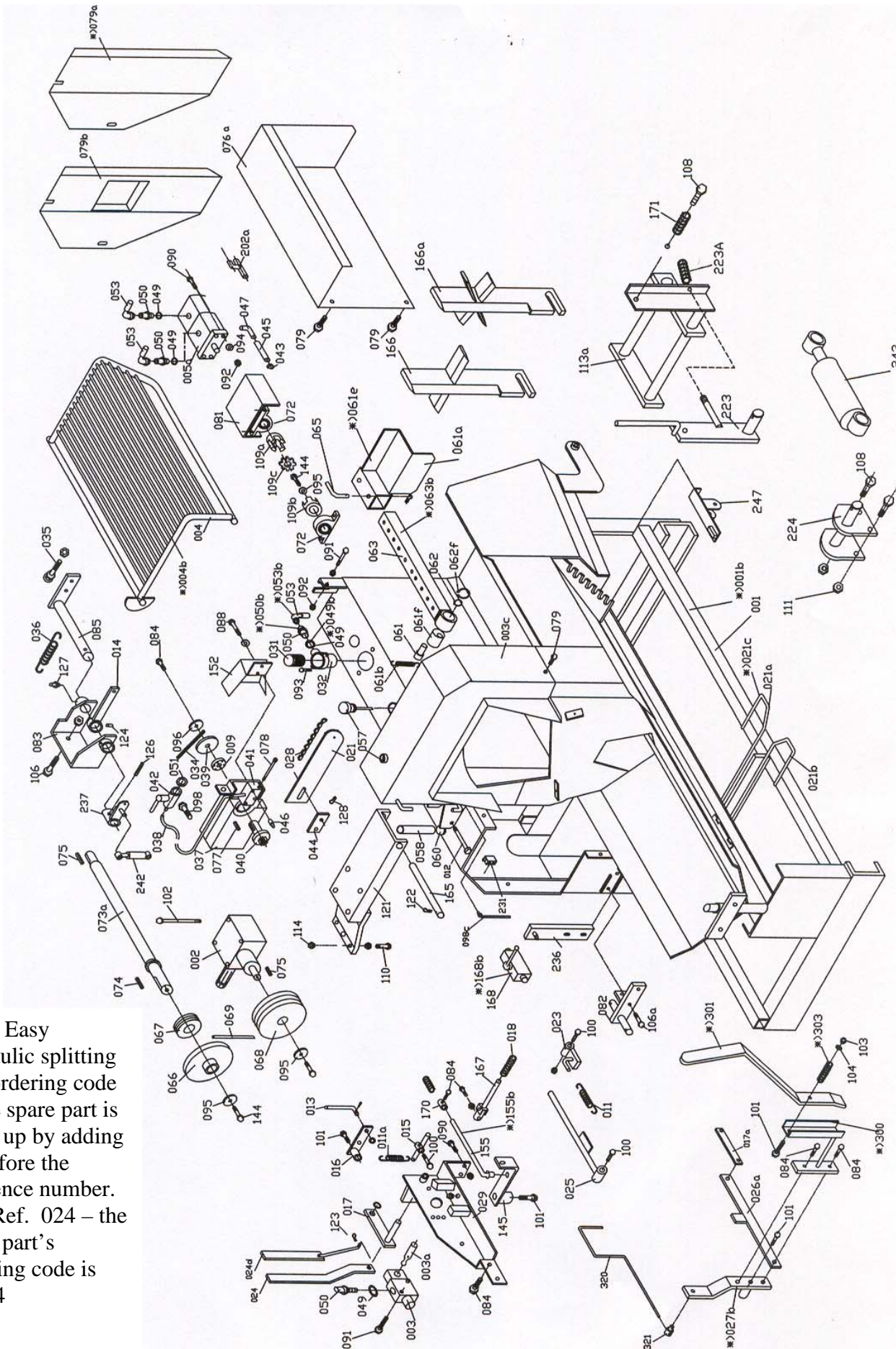
● = Lever of the valve



User of the machine

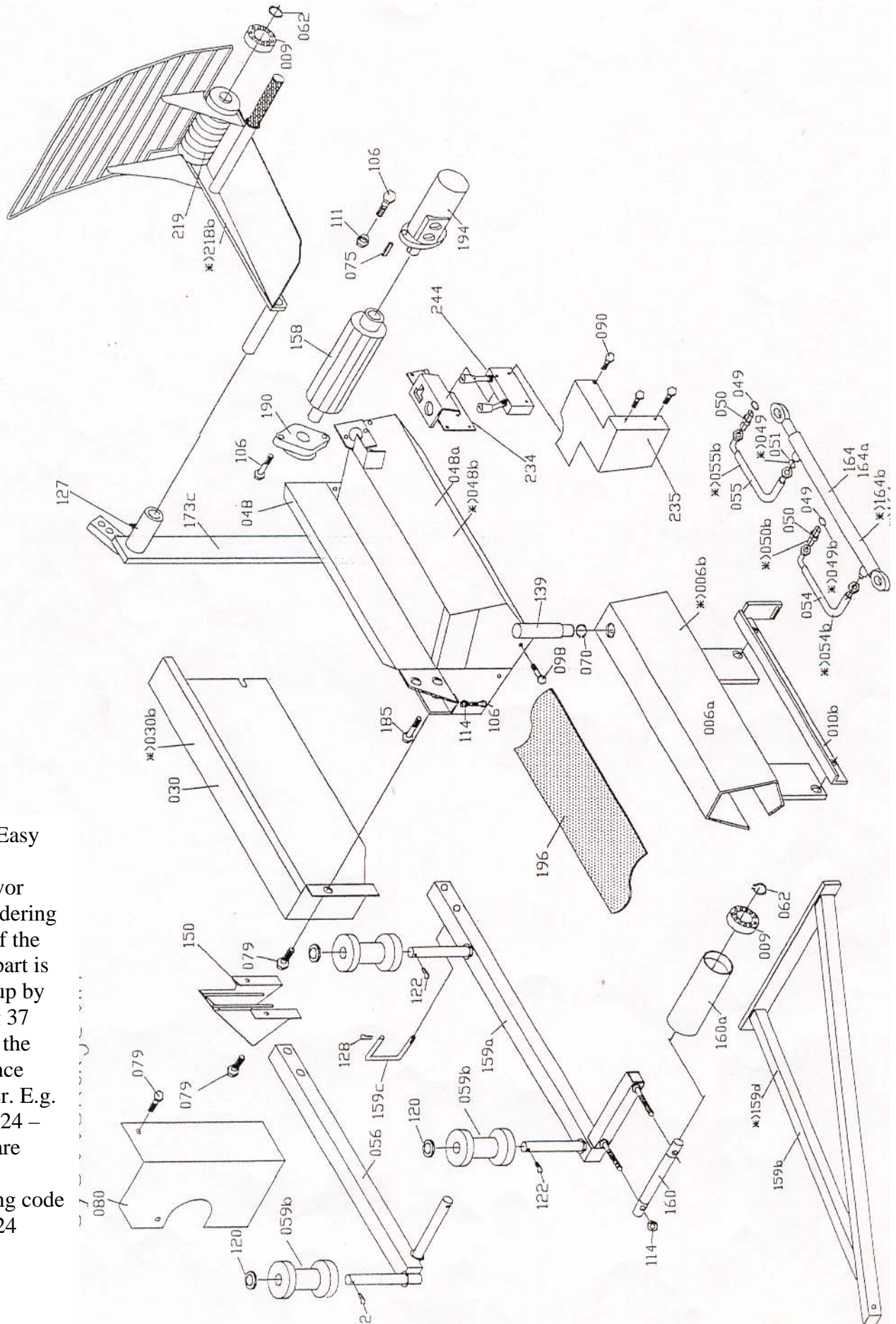
Hakki Pilke1X37 Easy

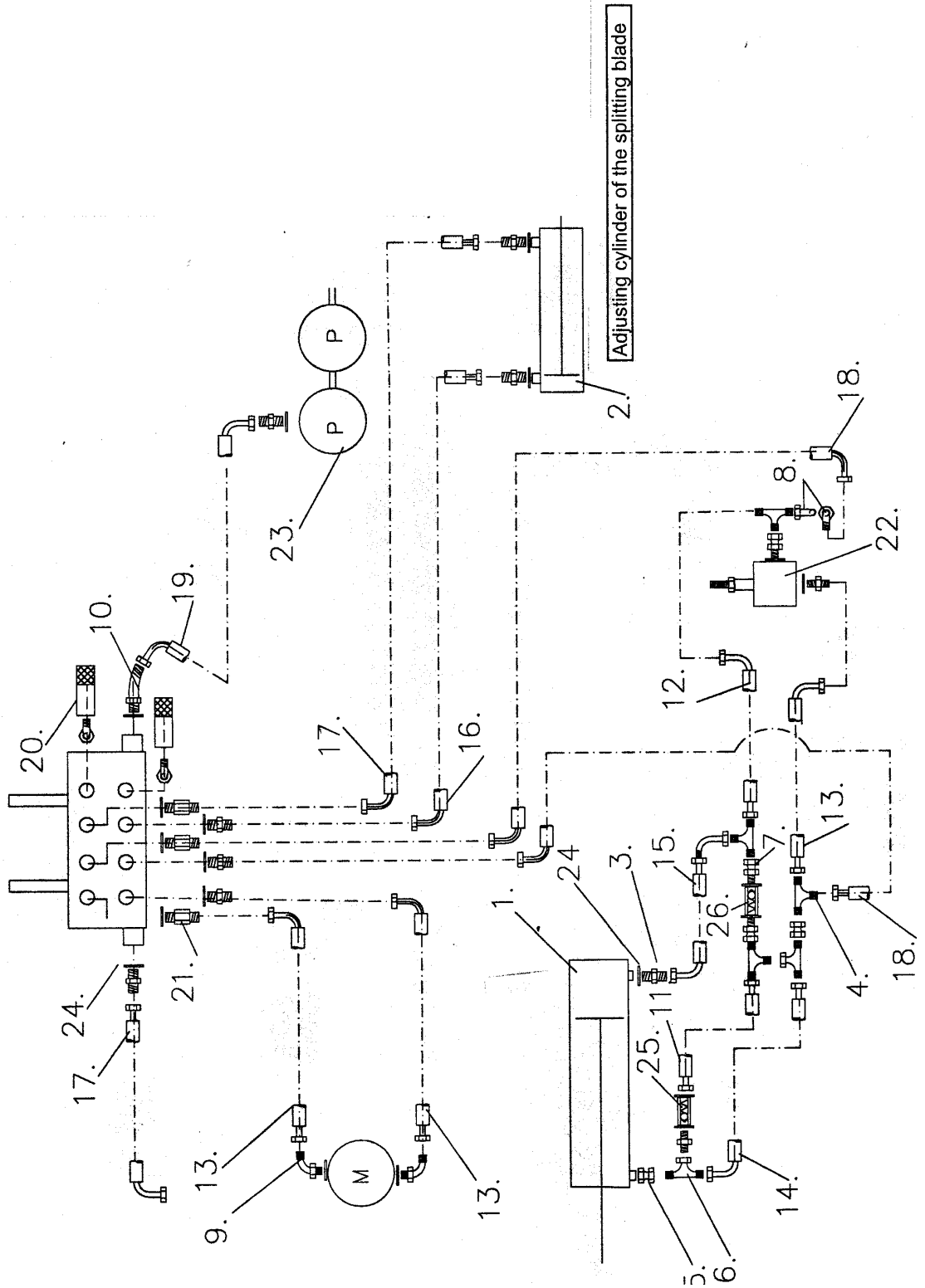
Code	Article	pcs
37005A	Double pump 16+6	1
370079b	Cover of the pump	1
370080h	Cover of the oil tank	1
370202a	Branch pipe of the double pump (after assembly)	1
37223	Control lever of the splitting blade	1
37223a	Compression spring D5X26X130	1
37224	Lug of the cylinder	2
37234	Rack for the valve	1
37235	Cover of the valve	1
37236	Fastener of the cylinder	1
37237	Fastener of the cylinder	1
37242	Cylinder D32/16-80	1
	Packing set	
	Eraser GA16/22x3x4	1
	Packing TS16/26x6	1
	O-ring D3x28	1
	Piston packing	
	DAS M32/24x9.5W	1
37243	Cylinder D50/32-190	1
	Packing set	
	Control unit ALDI 32/38x9.6	1
	Eraser GHM32	1
	Packing TS32/40x5.8	1
	O-ring D3x45	2
	Piston packing	
	SM 50/38x20W	1
37244	Valve	1
37247	Blade stopper	1



1X37 Easy
hydraulic splitting
The ordering code
of the spare part is
made up by adding
37 before the
reference number.
E.g. Ref. 024 – the
spare part's
ordering code is
37024

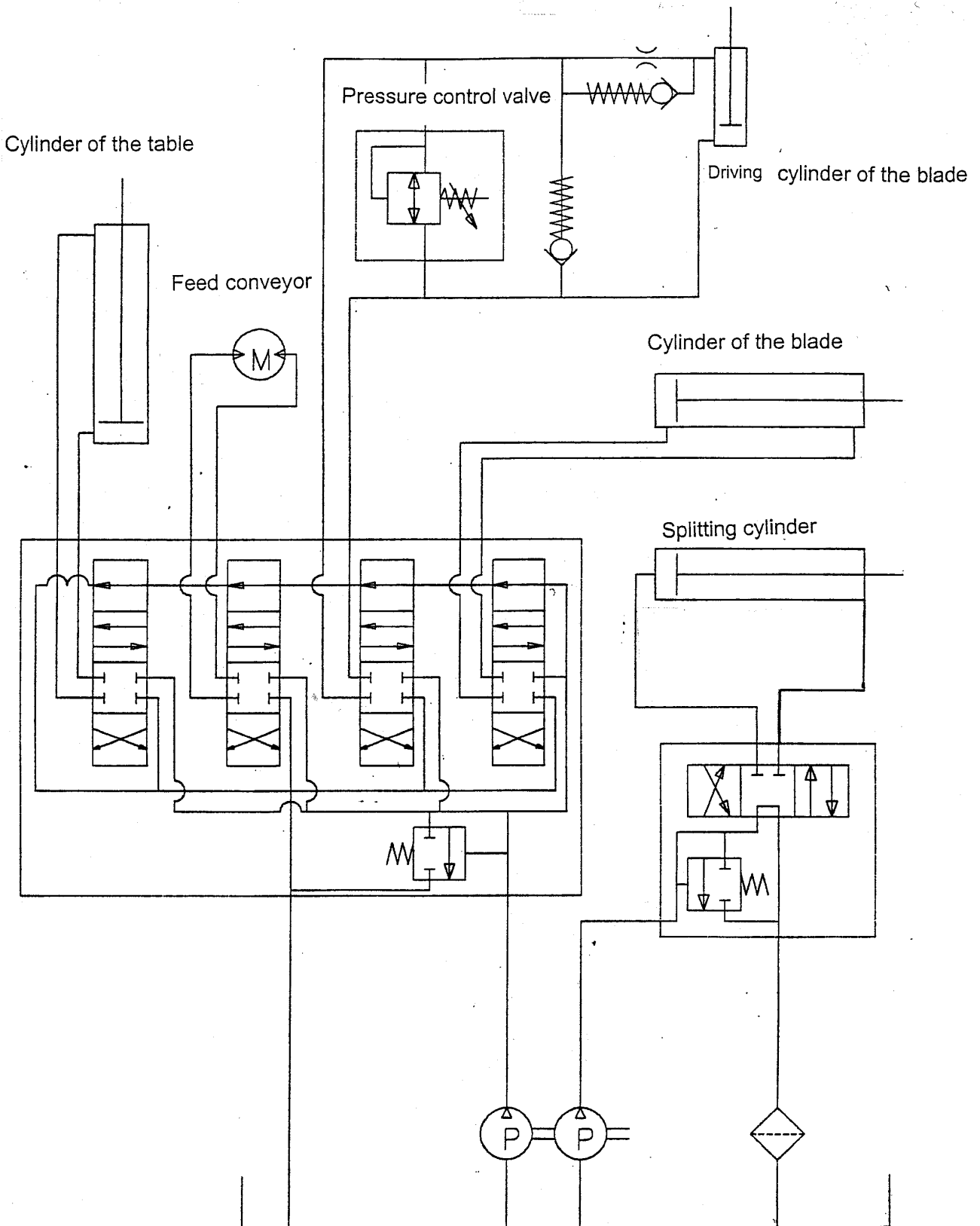
1X37 Easy
 feed
 conveyor
 The ordering
 code of the
 spare part is
 made up by
 adding 37
 before the
 reference
 number. E.g.
 Ref. 024 –
 the spare
 part's
 ordering code
 is 37024

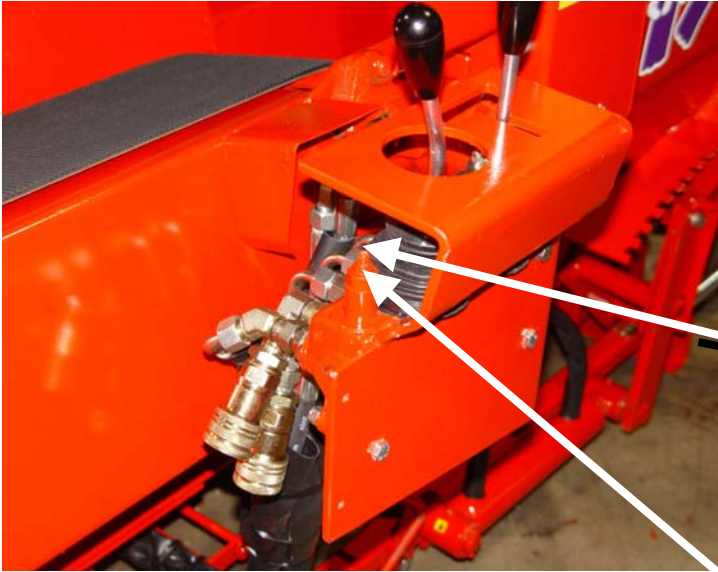




Splitting blade		
Code	Article	pcs
1	Cylinder of the chain	1
2	Control cylinder of the splitting blade	1
3	Double nipple 3/8"	12
4	T-branch 3/8"	2
5	Extension nipple	2
6	T-nipple (T) r-inside/R-outside screw	2
7	Connection nipple R-outside/r-inside	3
8	Angle nipple 90 degrees R-outside/R-inside	2
9	Angle nipple 90 degrees 1/2"/3/8"	2
10	Angle nipple 45 degrees 3/8"	1
11	3/8" hose length 0.3m	1
12	3/8" hose length 0.35m	1
13	3/8" hose length 0.4m	3
14	3/8" hose length 0.45m	1
15	3/8" hose length 0.5m	1
16	3/8" hose length 0.8m	1
17	3/8" hose length 1.0m	3
18	3/8" hose length 1.2m	1
19	3/8" hose length 2.4m	1
20	Fast coupling	2
21	Extension nipple	3
22	Valve of the pressure control lever	1
23	Pump 6+16	1
24	USIT packing 3/8"	19
25	Backpressure valve	2

Hydraulics diagram 1X37 EASY





Hydraulic settings of the EASY –model

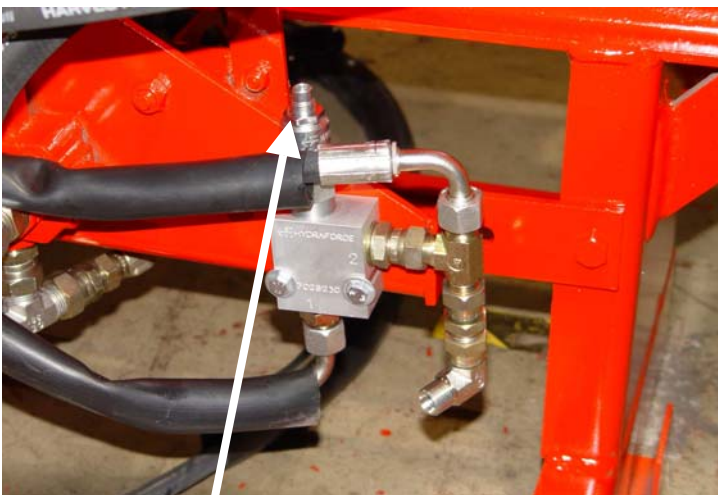
Working pressure of

- wood elevator
- feed conveyor
- wood cutting
- height of the splitting blade

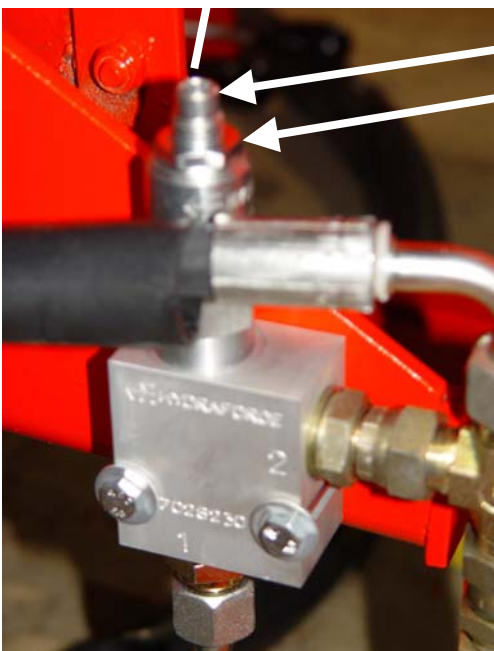
is regulated from the pressure constraint valve of the control valve

Adjustment:

1. Open the locking nut of the adjuster bolt
2. Adjust suitable pressure to hydraulic system from bolt (about **60 bar**)
3. Lock the adjuster bolt with nut



Speed and power of the cutting blade are regulated from the control valve which is behind the machine.



Adjuster bolt

Locking nut

Adjustment:

Open the locking nut of the adjuster bolt and regulate the speed and power of the cutting blade from the bolt. The speed and power are right when the power of the cutting blade is sufficient to split the wood.

In other words:

Too little power and speed:

The blade does not go properly to the wood

Too much power and speed:

The blade does not have enough energy to cut the wood and it stops to the wood.

Finally, lock the adjuster bolt with nut.

Maaselän Kone Oy
Rajakatu 25
85800 HAAPAJÄRVI
FINLAND

puh. +358 8 7727 300
fax +358 8 7727 320

www.maaselankone.fi

